



2008 Annual Report

Pursuant to §3.611 of the County Charter



County Executive
Steve Ehlmann

St Charles County, Missouri
March, 2009





Revenues

General Revenue \$55.2 million

58.5% Sales Taxes

Sales tax receipts down . . \$720,000

27.6% Fees, Licenses, Permits

Building permits &
recording fees down \$911,000

11.2% Grants and Contracts

2.3% Interest, Franchise Fees, Misc.

0.5% Property Taxes

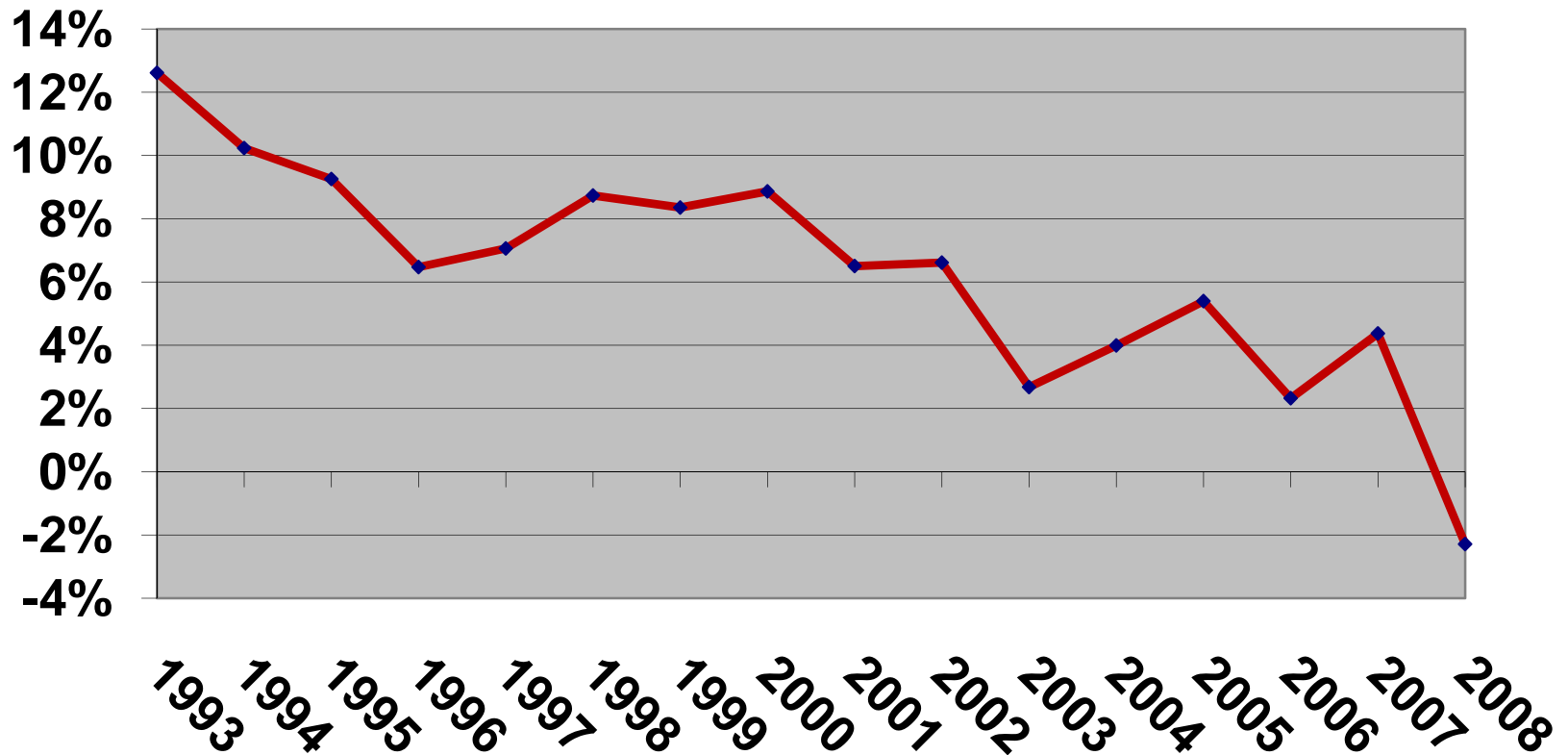
Road & Bridge \$15.7 million

Dispatch & Alarm \$3.0 million

Balanced budget without tax increase and provided 3% average raise for employees



Declining Sales Tax Growth 1993 - 2008 Actual



2008 Year End Sales Tax Growth: -2.29%



Sales Tax Reliance

County Operating Budget

Sales Tax Reliance: 58.5%

Lost County Revenue to

Tax Increment Financing (TIF):

FY 2002	\$1.02 million
FY 2003	\$1.60 million
FY 2004	\$1.27 million
FY 2005	\$1.45 million
FY 2006	\$1.62 million
FY 2007	\$1.72 million
FY 2008	<u>\$1.68 million</u>
Total	\$10.36 million





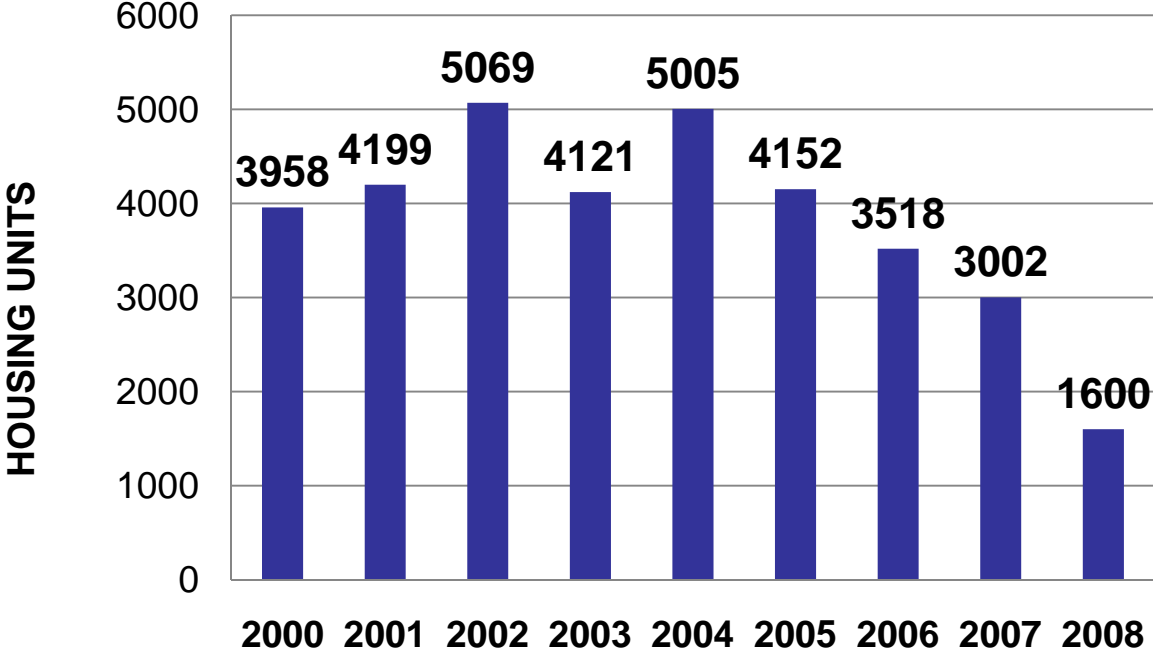
East West Gateway Study

- During the last 15 years, conservatively estimated, \$2.5 billion in public money has been committed regionally to supporting private development through TIF and taxing districts
- 80% of public investment supports retail development
- From 1990 to 2007, the retail sector grew from about 142,100 to 147,500 -- a gain of roughly 5,400 jobs
- This translates to **\$370,370 in public money per retail job created**



Housing Units Permitted

COUNTY-WIDE



46.7% decline in permits issued for 2008





Retail Vacancy Rates



Overall retail market vacancy rate of 13.2% for St. Charles County.



Rising vacancies forecasted in the St. Louis retail market for the first two quarters of 2009.

Source: Retail Market Trends St. Louis, Grubb & Ellis





Property Tax Rates

General Fund	0.0020¢
Road & Bridge	0.2025¢
Dispatch & Alarm	<u>0.0390¢</u>
	0.2435¢

** in cents per \$100 of assessed valuation*

Average homeowner's 2008 real property tax paid to county government:

\$ 0.74	General Fund
\$ 74.97	Road & Bridge
\$ <u>14.44</u>	Dispatch & Alarm
\$ 90.15	






Property Assessment Projections



County Assessor projects for 2009:

- New construction total reduced by 35% to 40%
 - Total county real property assessment drop of 3% to 8%;
 - tax bills depend upon final tax rates
 - Total county personal property assessment down 10% to 12%
 - due to fewer new car sales, less new and expanded business, and accelerated depreciation
- 





Road Board Projects

Transportation Sales Tax has contributed to a half billion in county and city road projects since its inception.

Rural projects for 2008 include:

Matson Hill Road

Morrison Lane

Holt Road

Terry Road

Pleasant Union Road

Wilson Road

Freymuth Road

Mette Road

Jarvis Road

Sneak Road

Hueffmeier Road

Femme Osage Creek Road

Dwiggins Road

Island Road

Genteman Road

Silvers Road

Dietrich Road

Wilson Road





Federal & State Road Projects



Page Extension – Route 364

- Construction underway through Harvester Road
- Construction in 2010 through Jungermann Road

New I-64 / Hwy 40 Missouri River Bridge

- Preliminary plans in development




I-70 Reliever -- Route 370 to Route 79

- Construction underway on segment north of Old Town St. Peters
- Includes county funded segment





Highway Department



Maintained 750 road miles and 79 bridges

- 2.8 miles reconstructed
- 57 miles overlaid / sealed
- 1,825 concrete slabs replaced
- 2 deficient bridges replaced





Community Development

- Updated County's Master Plan Envision 2020
- Cluster concept approved to promote green space without higher overall density in residential developments
- 92% resolution rate on code enforcement complaints
- Assessed 435 flood damaged structures
 - 234 permits issued for repair, elevation or demolition
 - Grants sought for buyouts of 23 structures and to assist in debris removal for the Grafton Ferry
- Lake Charles \$2 million dollar sanitary sewer project affecting 137 properties completed



Community Health

- Main facility renovation at 1650 Boone's Lick completed
- Recycle Works West facility upgrades underway to accommodate more recyclables
- Increased participation in WIC supplemental nutrition program
- Pet Adoption Center placed 2,034 pets and donations funded a cattery and a "tag" machine for pet tags



Elections

- 234,000 registered voters
- Highest voter turnout in Missouri for 2008 presidential election at 77.8%
- Recounts for two races confirmed election night results within 1% margins
- Security features and procedures expanded
- Continued costs associated with “free” election machinery



Family Arena

Record Setting Year

- 3 major sold-out shows
- 2 tours with highest grossing dates
- Achieved highest grossing event in Arena's 10-year history
- Produced first theatrical production
- River City Rage indoor football under 3-year contract



Parks

- **Bangert Island** opened for public use in partnership with Missouri Department of Conservation (160 acres)
- **Spring Bend Park** natural resource management work initiated with 30 volunteers (100 acres donated by Dr. William Knowles family)
- **County Heritage Museum** engineering and design underway
- Continue to look for opportunities for land acquisition





Public Safety

Crime Rate in unincorporated county fell from 21.6 to **19 per 1,000 residents**

14% drop in violent crimes

13% decrease in property crimes

Law Enforcement, Courts, and EMA account for 56.4% of county expenditures
(Sheriff 27.2%; Corrections 15.6%)

Dispatch & Alarm

- Equipment upgrade allows dispatch of closest response vehicle regardless of jurisdiction
- Upgraded 911 equipment provides cell phone locations on emergency calls





Workforce Development

- 62,079 job seeker visits in 2008 (+ 65%)
- 230 job postings at any one time (- 54%)
- 29 responses to business closures or layoffs affecting 50+ employees (+140%)



Unemployment Rate for December 2008:


St. Charles County 6.5%

State of Missouri 7.0%

** Not adjusted for seasonal variances, January 2009:*

St. Charles County 8.3%

State of Missouri 8.7%



MO Dept. Econ. Dev.





2009 Goals & Challenges

- Increase efficiencies in order to maintain services without raising property taxes
- Continue phase-in of market-based pay structure for employees
- Maintain reserves through economic downturn
- Educate public on proper uses of development incentives to attract new quality jobs (jobs with \$37,248+ wages, plus benefits)
- Work with state and regional leaders to promote job creation





2009 Goals, continued

- Accelerate Road Board projects, doubling amount invested for 2009-2010
- Establish economic development pool for Road Board projects
- Increase Community Development Block Grant funding
- Secure federal stimulus funding for Page Avenue Extension
- Establish funding to build and operate an emergency radio system compliant with new federal requirements

