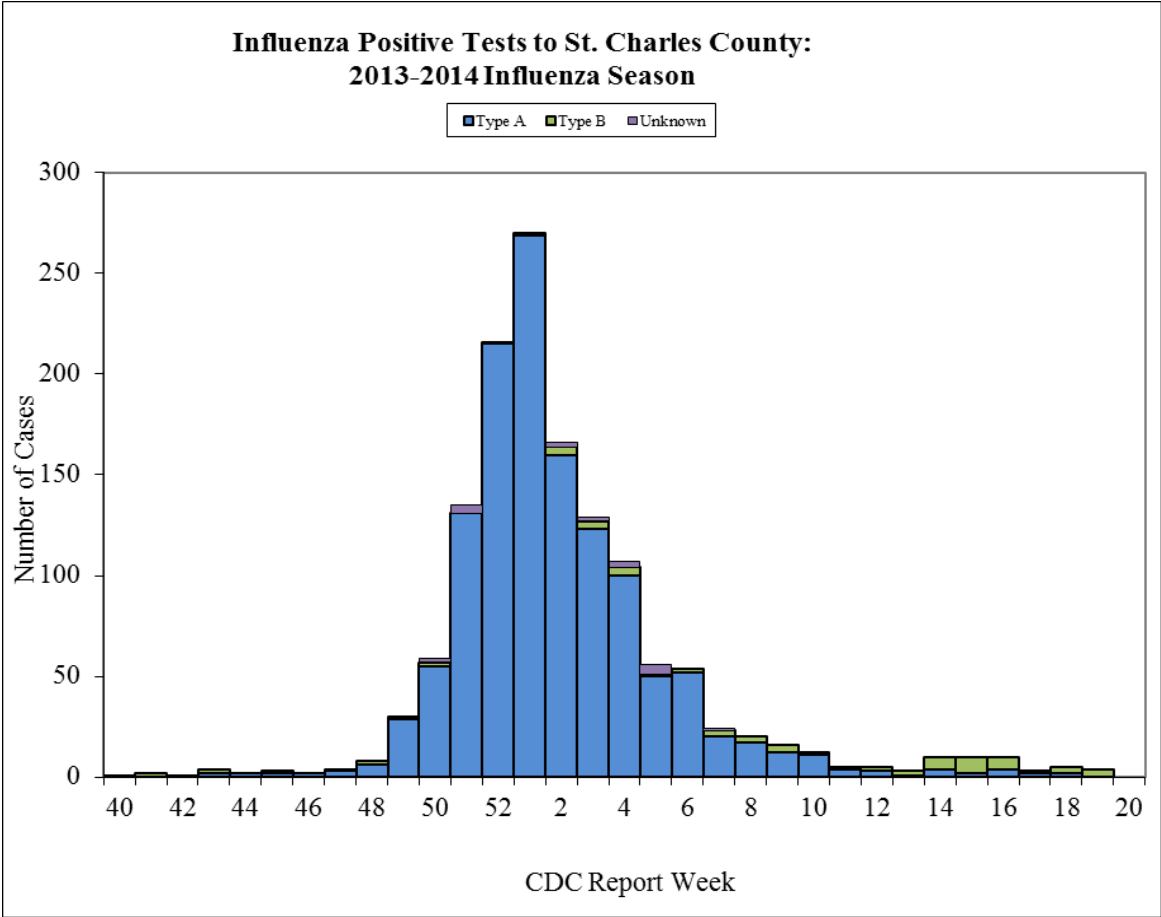


St. Charles County
Department of Community Health and Environment
Influenza Season 2013-2014

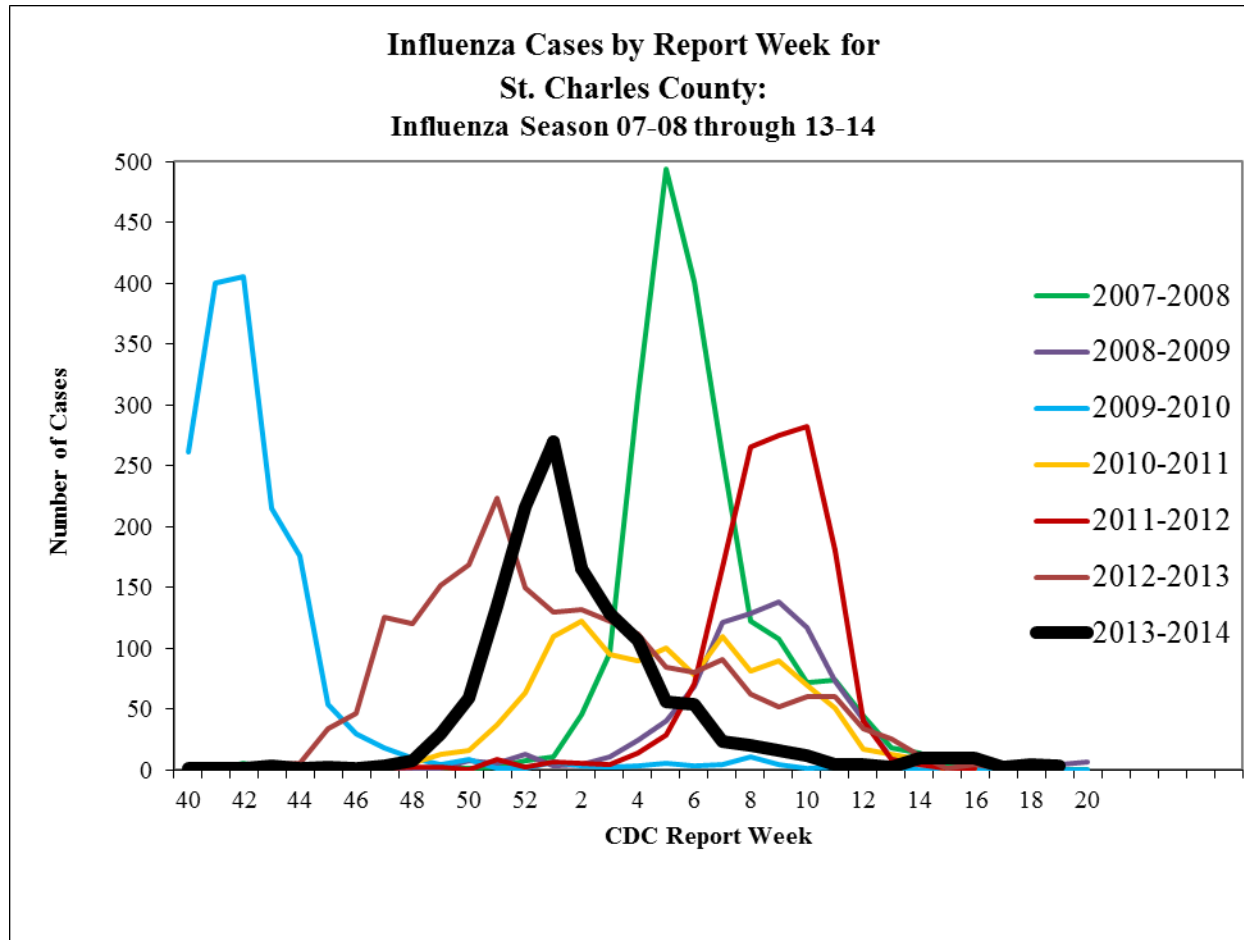
Report Date: May 20, 2014 – CDC report week 20

Influenza season begins the beginning of October, since that time we have had 1376 cases of influenza reported to our office; 1285 (93.4%) type A, 72 (5.2%) type B, and 19 (1.4%) unknown. Although a large percentage of the cases seen this flu season were type A, in the last 5 weeks 68.8% of the cases reported have been type B.

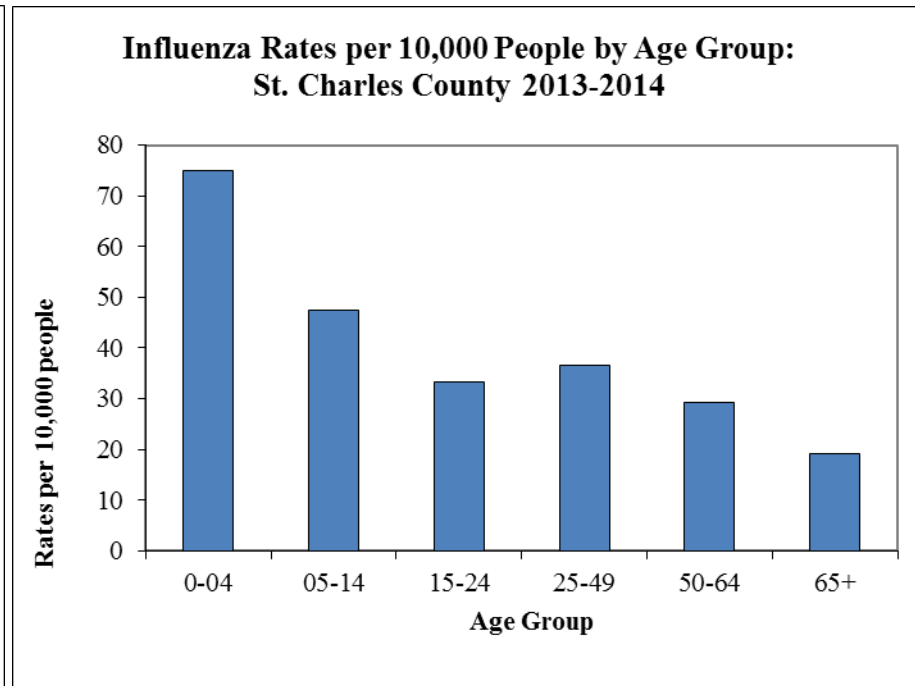
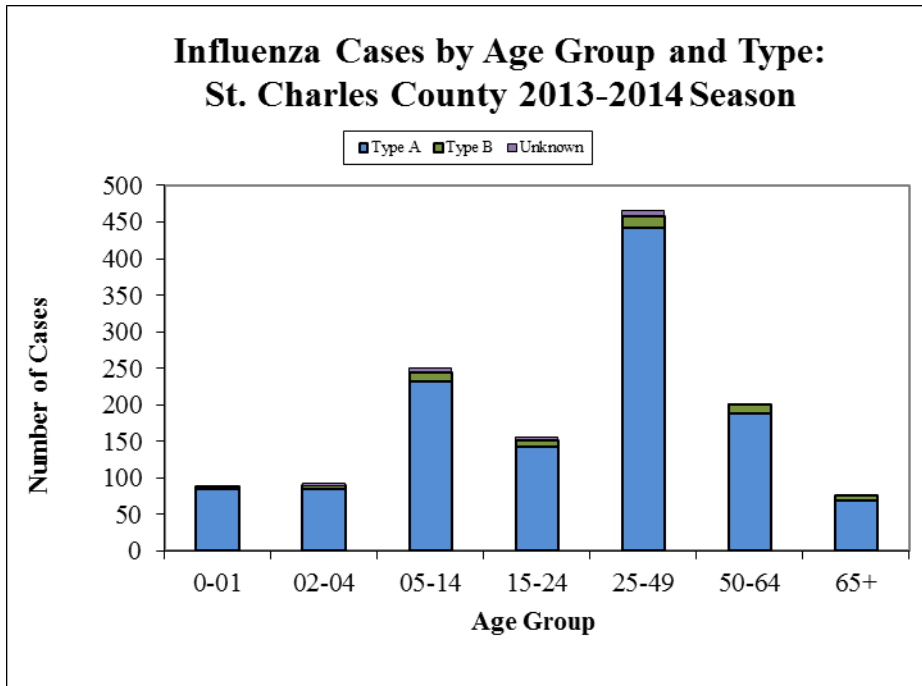
Graph1: Influenza cases by type and report week in St. Charles County



Graph 2: Seven year comparison of total number of influenza cases by report week. The black line represents the current season.



Graph 3 and 4: Number of Influenza cases and rates of influenza cases by age group. Most cases reported are in the 25-49 age group. The highest rates are in the 0-04 age groups.



Graph 5: This is data taken from Missouri ESSENCE which is a syndromic surveillance system looking at chief complaint data from hospital emergency rooms in Missouri (does not indicate diagnosis). This graph looks at percent influenza-like illness (ILI) in St. Charles County Hospital Emergency Department's.

