



PDMP Brief – Q3 2019 – St. Charles County

The St. Louis County Prescription Drug Monitoring Program (PDMP) monitors the prescribing and dispensing of schedule II-IV controlled substances to assist in the identification and prevention of prescription drug misuse and abuse. The program’s goals are to 1) improve controlled substance prescribing, 2) inform clinical practice, and 3) reduce the number of people who misuse, abuse, or overdose.

The St. Louis County PDMP launched on April 25, 2017, with 14 jurisdictions participating in the initial implementation. Saint Louis County Department of Public Health (DPH) operates the PDMP on behalf of all participating jurisdictions. As of September 30, 2019, 75 jurisdictions have enacted legislation to participate in the St. Louis County PDMP.

As of 09/30/2019, there are over 15,400 approved users within the system. Figure 1 represents approved user counts for the total PDMP by quarter as well as the average number of patient searches performed per day. System utilization has increased as both the number of approved users and participating jurisdictions have increased. In Q3 2019, over 7,700 patient searches were performed daily by healthcare providers. Increasing utilization of the PDMP is a continued focus of DPH.

Figure 1. PDMP registration and utilization by quarter.

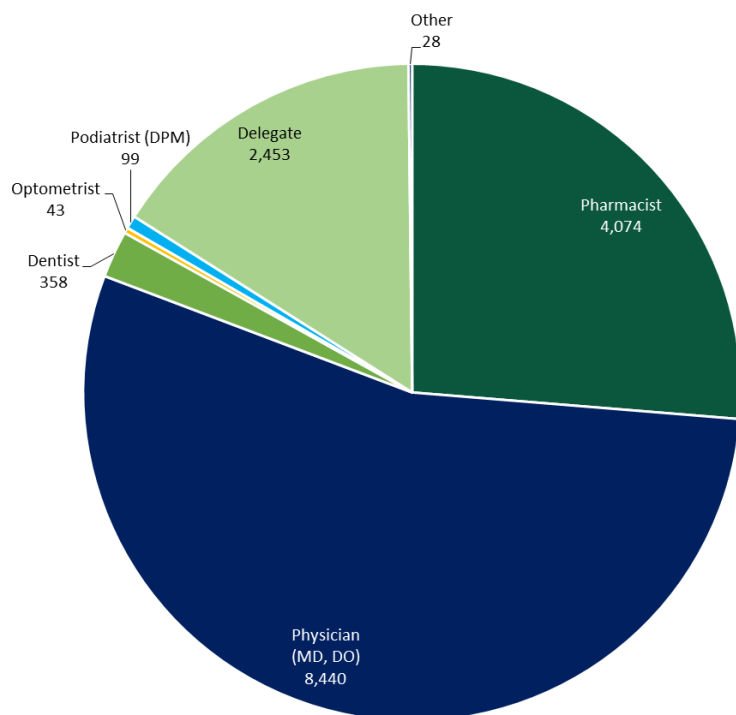
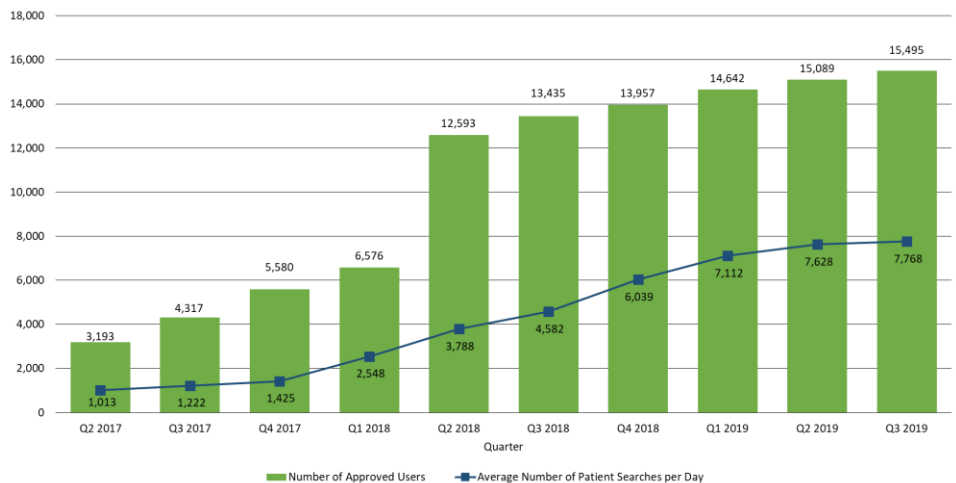


Figure 2. PDMP approved user counts by user role. Figure 2 represents approved users by role. As of 09/30/19, there were more than 15,400 approved users in the PDMP. The increase in users in Q2 2018 was a result of mass provider registration; mass registration is where a health system, hospital, medical group, or healthcare practice can bulk register their healthcare providers in the PDMP.

58% of PDMP users are prescribers (physicians, dentists, optometrists, and podiatrists).

26% of users are pharmacists.

Additional information on the PDMP can be found at www.stlouisco.com/PDMP or by contacting DPH at PDMP.DPH@stlouisco.com or 314-615-0522.



Opioid Dispensations

Across all age groups, opioids were the most frequently prescribed schedule II-IV controlled substance drug type. Opioids comprise ~40% of all controlled substances dispensed. Hydrocodone, oxycodone, and tramadol were the three most frequently prescribed opioids (over 82% of opioid prescriptions).

St. Charles County's opioid dispensation rate was 655.1 per 1,000 population which is significantly lower than the total system (693.0 per 1,000 population).

Figure 3. Opioid dispensation rates per 1,000 by patient location.

Figure 3 represents opioid dispensation rates per 1,000 population for each jurisdiction compared to the total system. Jurisdictions were categorized as either higher, lower, or not different than the overall dispensation rate based on statistical significance at $\alpha = .05$.

*Rates represent projected annual rates based on one quarter of data.

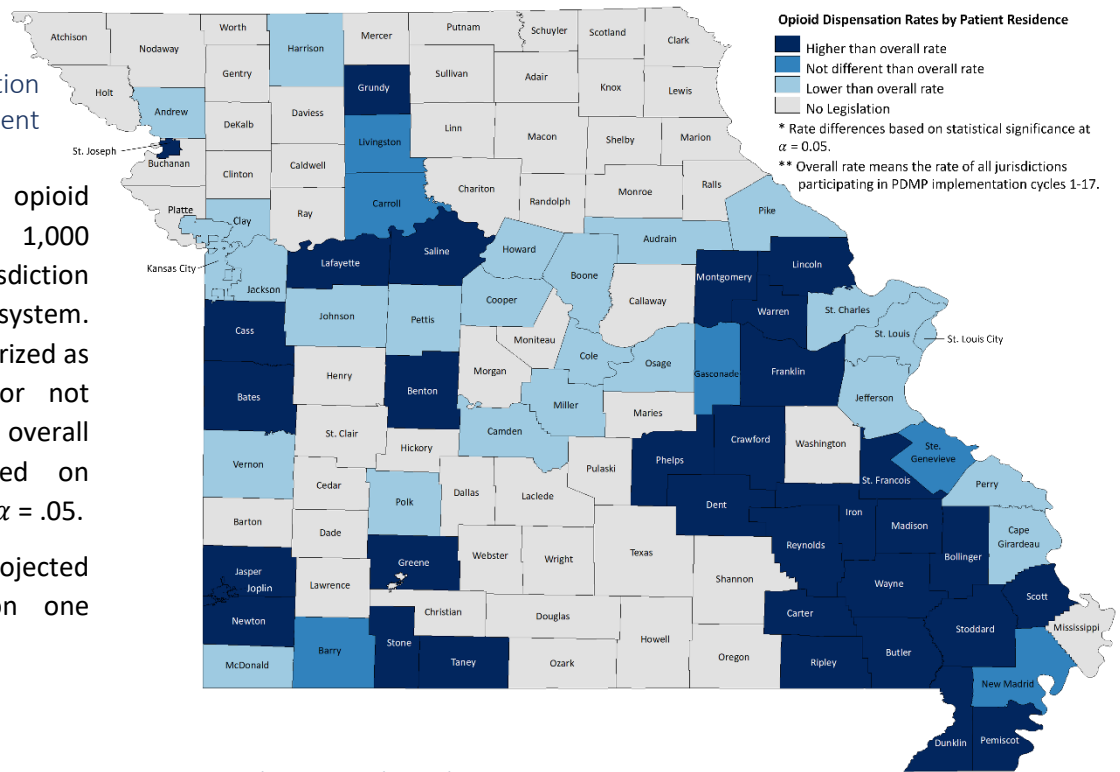
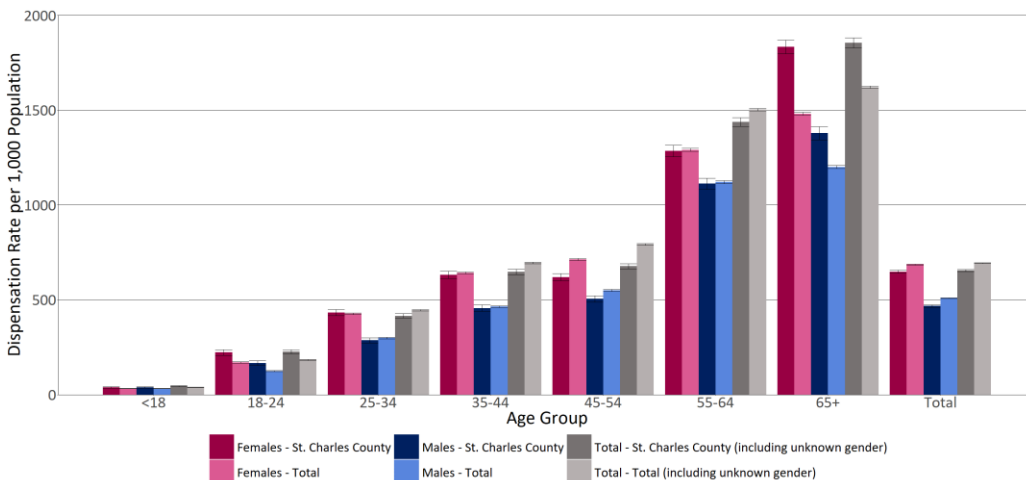


Figure 4. Opioid dispensation rates per 1,000 by age and gender.



Opioid dispensation rates increase as patient age increases.

Females received higher rates of opioid prescriptions than males across most age groups as displayed in Figure 4.

Across genders captured, St. Charles County residents aged 65+ received the highest rates of opioids compared to all other age groups – more than 1.8 opioid prescriptions per St. Charles County resident aged 65+.



Table 1a. Opioid dispensation rates per 1,000 population by jurisdiction, age, and gender; jurisdictions A-J.

	<18		18-24		25-34		35-44		45-54		55-64		65+		Total	
	Rate	95% CI	Rate	95% CI	Rate	95% CI	Rate	95% CI	Rate	95% CI	Rate	95% CI	Rate	95% CI	Rate	95% CI
Andrew County	41.3	(29.0, 53.7)	167.7	(123.4, 212.0)	408.2	(350.8, 465.6)	566.2	(503.4, 629.1)	659.2	(597.9, 720.6)	1087.8	(1003.2, 1172.4)	1502.4	(1409.6, 1595.2)	622.3	(598.8, 645.8)
Female	31.8	(16.2, 47.4)	139.2	(82.3, 196.1)	334.7	(261.8, 407.6)	396.0	(321.7, 470.3)	521.4	(444.5, 598.2)	949.7	(837.3, 1062.2)	1410.4	(1291.1, 1529.7)	554.6	(523.4, 585.7)
Male	35.3	(19.4, 51.2)	147.5	(88.5, 206.5)	218.6	(158.6, 278.7)	438.8	(360.6, 517.0)	473.1	(399.3, 546.8)	945.0	(834.1, 1055.8)	1233.2	(1105.2, 1361.1)	474.1	(444.8, 503.4)
Audrain County	27.6	(19.5, 35.8)	183.0	(146.2, 219.7)	413.2	(369.0, 457.3)	570.9	(517.8, 623.9)	745.6	(689.1, 802.1)	1303.1	(1221.9, 1384.2)	1336.9	(1266.0, 1407.8)	618.0	(598.7, 637.3)
Female	37.7	(23.7, 51.6)	239.0	(182.6, 295.3)	428.9	(370.8, 487.1)	607.4	(535.0, 679.9)	864.0	(780.7, 947.3)	1438.6	(1320.0, 1557.2)	1370.7	(1276.8, 1464.5)	691.6	(663.8, 719.4)
Male	18.8	(9.6, 28.1)	112.8	(69.4, 156.2)	355.8	(291.1, 420.6)	522.4	(445.0, 599.8)	610.6	(535.8, 685.4)	1158.0	(1047.9, 1268.1)	1289.2	(1180.9, 1397.4)	528.6	(502.3, 554.8)
Barry County	34.3	(26.9, 42.6)	180.6	(148.6, 212.5)	502.9	(457.0, 548.8)	598.7	(551.8, 645.6)	777.2	(729.9, 824.5)	1383.6	(1316.9, 1450.4)	1351.0	(1293.4, 1408.5)	684.4	(667.3, 701.6)
Female	30.3	(19.8, 40.8)	227.9	(175.9, 279.8)	573.3	(504.4, 642.2)	706.8	(635.0, 778.5)	858.1	(781.1, 929.1)	1343.3	(1250.8, 1435.7)	1430.5	(1350.1, 1510.9)	743.9	(718.7, 769.2)
Male	34.5	(23.5, 45.4)	137.4	(99.0, 175.9)	417.4	(357.9, 477.0)	473.5	(414.4, 532.7)	687.5	(625.2, 749.9)	1416.5	(1320.4, 1512.5)	1231.5	(1150.3, 1312.8)	612.8	(589.7, 635.9)
Bates County	31.0	(20.4, 41.6)	253.7	(197.4, 310.0)	471.2	(408.8, 533.0)	664.3	(592.1, 736.5)	875.6	(803.9, 947.4)	1751.5	(1638.8, 1864.3)	1698.6	(1605.6, 1791.6)	806.1	(779.2, 833.1)
Female	25.2	(11.5, 38.9)	278.1	(194.0, 362.3)	418.3	(334.6, 502.0)	802.5	(689.0, 916.0)	1034.3	(924.2, 1144.4)	1736.3	(1580.0, 1892.6)	1755.0	(1629.0, 1881.0)	879.9	(840.3, 919.4)
Male	29.2	(14.9, 43.5)	198.1	(128.4, 267.8)	463.3	(376.4, 550.3)	436.0	(354.1, 517.9)	663.9	(563.6, 764.0)	1603.9	(1448.8, 1759.0)	1544.3	(1410.3, 1678.3)	665.2	(630.3, 730.0)
Benton County	25.6	(14.9, 36.3)	222.6	(166.3, 279.0)	589.8	(508.4, 671.1)	637.6	(565.5, 709.8)	1069.5	(994.1, 1144.9)	1634.9	(1549.7, 1720.1)	1628.8	(1557.6, 1700.1)	1003.8	(975.3, 1032.2)
Female	19.2	(5.9, 32.5)	278.5	(187.5, 369.5)	746.0	(616.2, 875.7)	728.4	(620.5, 836.3)	1099.6	(990.4, 1208.9)	1626.5	(1508.0, 1745.1)	1685.4	(1583.4, 1787.3)	1054.7	(1013.4, 1095.9)
Male	27.1	(11.8, 42.4)	135.5	(74.6, 196.4)	394.8	(300.9, 488.6)	486.4	(396.3, 576.5)	910.6	(813.2, 1007.9)	1560.6	(1441.2, 1679.9)	1494.3	(1397.3, 1591.2)	887.3	(849.5, 921.3)
Bollinger County	27.4	(15.4, 39.5)	150.5	(101.3, 199.6)	505.5	(427.4, 583.6)	791.6	(704.8, 904.8)	824.2	(738.8, 904.8)	1702.8	(1578.3, 1827.2)	1620.2	(1510.2, 1730.2)	799.8	(785.9, 813.1)
Female	14.1	(1.7, 26.4)	134.2	(68.4, 199.9)	515.5	(401.8, 629.2)	627.2	(515.9, 738.6)	819.2	(704.5, 933.9)	1517.2	(1350.7, 1683.7)	1708.5	(1553.4, 1863.7)	779.1	(735.1, 823.2)
Male	34.7	(15.8, 53.6)	141.7	(74.3, 209.0)	429.7	(329.7, 529.6)	845.5	(712.8, 978.2)	764.6	(655.9, 873.3)	1674.5	(1500.3, 1848.7)	1367.8	(1220.4, 1515.1)	732.5	(689.9, 775.2)
Boone County	28.8	(25.2, 32.4)	81.5	(75.4, 87.6)	362.7	(347.7, 377.7)	667.4	(643.9, 690.9)	685.2	(662.2, 708.3)	1279.5	(1244.5, 1314.4)	1674.6	(1633.3, 1715.9)	520.1	(511.1, 527.1)
Female	29.0	(23.9, 34.2)	85.3	(76.8, 93.9)	422.6	(395.5, 445.6)	743.0	(708.3, 778.5)	737.5	(713.8, 801.2)	1315.4	(1266.3, 1364.5)	1812.6	(1755.8, 1869.4)	584.4	(574.8, 594.0)
Male	28.0	(23.0, 32.9)	74.1	(65.7, 82.5)	282.0	(263.4, 300.7)	560.1	(529.4, 590.9)	557.0	(526.8, 587.1)	1193.9	(1145.2, 1242.6)	1441.8	(1383.1, 1500.5)	431.4	(422.2, 440.6)
Butler County	44.9	(36.6, 53.3)	281.4	(246.4, 316.3)	679.2	(633.5, 724.8)	1132.8	(1074.7, 1190.9)	1119.7	(1067.2, 1172.2)	1817.3	(1746.8, 1887.9)	1506.4	(1450.0, 1562.8)	906.9	(888.9, 925.0)
Female	42.8	(31.2, 54.5)	334.7	(280.0, 388.6)	697.6	(634.0, 761.2)	1180.1	(1097.2, 1263.1)	1162.5	(1087.1, 1236.3)	1783.4	(1686.8, 1880.0)	1437.6	(1364.3, 1510.9)	931.0	(905.6, 956.4)
Male	42.2	(31.0, 53.5)	162.6	(128.4, 200.2)	455.4	(400.9, 509.8)	831.1	(759.9, 902.2)	762.5	(700.4, 824.7)	1454.7	(1363.2, 1546.2)	1074.0	(1001.6, 1146.5)	642.7	(620.8, 664.6)
Camden County	15.3	(10.0, 20.5)	104.1	(80.4, 127.8)	201.0	(173.5, 228.4)	298.1	(266.0, 329.0)	271.3	(246.6, 296.0)	448.7	(419.1, 478.4)	592.0	(561.1, 622.9)	309.0	(298.6, 319.4)
Female	12.6	(5.8, 19.5)	122.1	(85.2, 159.0)	235.2	(193.1, 277.3)	297.1	(251.9, 342.3)	298.4	(261.9, 334.8)	405.5	(366.5, 444.4)	675.0	(628.5, 721.5)	329.9	(314.7, 345.0)
Male	15.9	(8.3, 23.5)	84.5	(54.8, 114.3)	159.3	(124.8, 193.8)	259.3	(216.8, 301.8)	217.6	(186.2, 249.1)	462.4	(378.9, 461.9)	466.4	(427.5, 505.3)	256.6	(243.2, 270.0)
Cape Girardeau County	39.8	(33.7, 45.8)	129.5	(115.8, 143.3)	492.4	(464.2, 520.6)	774.9	(738.2, 811.6)	759.5	(726.0, 793.0)	1270.9	(1224.2, 1317.6)	1484.2	(1438.3, 1530.1)	646.2	(634.8, 657.7)
Female	40.8	(32.0, 49.6)	120.9	(102.6, 139.3)	496.1	(455.9, 536.3)	694.2	(645.4, 743.0)	772.7	(725.3, 820.1)	1296.9	(1231.2, 1362.6)	1425.6	(1366.6, 1484.5)	652.8	(636.8, 668.8)
Male	30.3	(22.8, 37.7)	89.7	(73.2, 106.3)	379.8	(344.8, 414.8)	618.7	(620.1, 717.3)	566.3	(525.1, 607.5)	960.4	(902.1, 1018.7)	1232.1	(1167.5, 1296.8)	493.8	(479.4, 508.2)
Carroll County	38.3	(21.9, 54.7)	285.7	(203.1, 368.3)	432.3	(350.4, 514.2)	628.9	(521.6, 704.3)	862.6	(728.2, 925.0)	1243.4	(1119.5, 1367.3)	1335.6	(1228.2, 1443.0)	688.5	(654.8, 722.3)
Female	37.0	(14.1, 59.9)	208.0	(109.1, 306.8)	319.7	(221.8, 417.5)	644.5	(512.8, 776.2)	836.9	(696.3, 977.6)	1209.8	(1035.9, 1383.6)	1357.3	(1213.0, 1501.6)	690.9	(643.7, 738.1)
Male	28.8	(8.8, 48.8)	201.9	(103.0, 300.8)	192.9	(114.0, 271.7)	222.2	(144.0, 300.5)	438.9	(337.9, 539.0)	800.0	(660.3, 939.7)	859.7	(729.3, 990.1)	395.1	(355.1, 439.0)
Carters County	37.0	(17.6, 56.3)	174.2	(103.0, 245.5)	485.4	(378.4, 592.4)	611.3	(499.1, 723.5)	889.4	(768.8, 1009.9)	1652.1	(1478.7, 1825.4)	1576.9	(1424.3, 1729.6)	764.9	(721.6, 808.2)
Female	25.8	(3.2, 48.5)	290.9	(163.4, 418.4)	714.7	(529.2, 900.3)	591.0	(436.2, 745.8)	1043.5	(856.8, 1230.2)	1420.2	(1198.8, 1641.7)	1390.7	(1195.0, 1578.6)	760.1	(699.8, 820.4)
Male	43.2	(13.3, 73.1)	*	*	204.8	(107.5, 302.2)	555.9	(403.3, 708.4)	666.7	(520.6, 812.8)	1510.0	(1269.2, 1750.8)	1626.6	(1398.8, 1854.3)	661.2	(603.5, 718.9)
Cass County	41.9	(37.0, 46.9)	235.5	(213.7, 257.4)	418.0	(394.9, 441.0)	678.3	(650.2, 706.4)	806.2	(779.7, 834.8)	1709.2	(1661.2, 1757.3)	1745.7	(1701.1, 1790.3)	726.6	(715.9, 737.2)
Female	28.7	(22.9, 34.6)	176.6	(143.8, 197.4)	307.2	(279.7, 334.7)	484.2	(450.9, 517.4)	622.8	(484.6, 657.8)	1295.0	(1237.1, 1352.8)	1601.5	(1544.4, 1658.6)	606.0	(592.5, 619.6)
Male	30.5	(24.6, 36.4)	98.0	(78.4, 117.7)	199.3	(176.4, 222.2)	338.6	(310.4, 366.9)	410.1	(381.1, 439.1)	1031.6	(977.6, 1085.7)	1074.8	(1022.0, 1127.7)	395.6	(384.0, 406.8)
City of St. Joseph	46.9	(40.6, 53.3)	170.8	(153.6, 188.0)	636.8	(606.7, 667.0)	873.2	(835.0, 911.3)	993.9	(961.5, 1037.2)	1959.0	(1899.3, 2018.7)	1820.3	(1768.9, 1871.6)	831.1	(817.1, 844.0)
Female	36.6	(28.6, 46.6)	119.5	(98.9, 140.0)	457.4	(420.1, 494.8)	646.5	(598.5, 694.6)	899.3	(789.3, 889.2)	1465.7	(1405.4, 1633.6)	1465.7	(1405.6, 1524.9)	688.3	(671.2, 704.8)
Male	36.6	(28.8, 44.3)	84.5	(67.6, 101.3)	271.3	(244.4, 298.3)	454.6	(416.8, 492.4)	556.9	(517.6, 596.3)	1336.9	(1266.0, 1407.9)	1322.8	(1253.0, 1392.6)	485.0	(471.1, 499.0)
Clay County	40.0	(35.9, 45.3)	217.7	(198.2, 237.2)	304.6	(287.2, 321.9)	535.0	(512.0, 558.0)	729.0	(702.6, 755.4)	1285.1	(1245.0, 1325.2)	1735.1	(1688.3, 1781.8)	597.3	(588.1, 606.5)
Female	27.8	(22.2, 33.3)	158.2	(134.8, 181.7)	225.0	(204.1, 245.9)	426.0	(397.2, 454.8)	550.8	(518.6, 5						



Table 1b. Opioid dispensation rates per 1,000 population by jurisdiction, age, and gender; jurisdictions K-Z.

Opioids	<18		18-24		25-34		35-44		45-54		55-64		65+		Total		
	Rate	95% CI	Rate	95% CI	Rate	95% CI	Rate	95% CI	Rate	95% CI	Rate	95% CI	Rate	95% CI			
Kansas City	35.5 (33.3, 37.7)	175.4 (167.7, 183.0)	330.4 (322.2, 338.6)	545.1 (533.4, 556.8)	661.0 (648.5, 673.5)	1321.8 (1301.8, 1341.9)	1464.4 (1443.3, 1485.4)	553.3 (549.0, 557.6)	25.8 (23.1, 28.5)	126.7 (117.7, 135.8)	242.5 (232.6, 252.4)	381.8 (367.9, 395.7)	462.0 (447.3, 476.7)	923.1 (900.0, 946.1)	1042.3 (1019.1, 1065.4)	406.9 (401.8, 412.1)	
Female	25.8 (23.1, 28.5)	126.7 (117.7, 135.8)	242.5 (232.6, 252.4)	381.8 (367.9, 395.7)	462.0 (447.3, 476.7)	923.1 (900.0, 946.1)	1042.3 (1019.1, 1065.4)	406.9 (401.8, 412.1)	23.6 (21.1, 26.1)	83.4 (75.8, 91.1)	161.8 (153.6, 169.9)	273.0 (261.3, 284.7)	337.9 (325.1, 350.6)	737.8 (716.0, 759.5)	826.5 (801.9, 851.2)	283.7 (279.3, 288.1)	
Male	10.0 (8.2, 12.0)	100.0 (90.0, 110.0)	100.0 (90.0, 110.0)	163.3 (156.5, 170.1)	199.0 (194.2, 203.8)	408.7 (401.1, 416.3)	422.1 (413.2, 431.0)	556.4 (549.9, 562.9)	Lafayette County	43.0 (39.0, 47.0)	249.9 (206.3, 281.6)	512.7 (466.3, 559.1)	738.1 (685.5, 790.6)	924.6 (872.2, 976.9)	1567.3 (1490.7, 1643.8)	717.5 (699.4, 735.7)	
Female	44.2 (31.2, 57.4)	227.3 (174.8, 279.8)	512.1 (446.3, 577.8)	724.5 (651.9, 797.2)	842.8 (771.7, 914.0)	1229.0 (1134.4, 1323.6)	1014.6 (946.2, 1089.0)	638.5 (614.4, 662.6)	Female	30.4 (29.0, 31.8)	139.8 (100.3, 179.4)	269.7 (222.2, 317.2)	432.2 (374.6, 489.9)	554.7 (497.7, 611.6)	1112.0 (1016.6, 1206.4)	854.7 (811.2, 928.2)	451.2 (430.7, 471.8)
Male	12.6 (10.8, 14.4)	110.6 (86.4, 134.8)	150.6 (130.0, 171.2)	247.6 (214.6, 280.6)	281.8 (250.0, 313.6)	400.0 (377.8, 422.2)	393.0 (377.5, 408.5)	380.0 (363.0, 397.0)	Lincoln County	45.1 (38.2, 51.9)	268.2 (237.1, 299.2)	610.4 (573.6, 647.2)	820.5 (797.7, 883.8)	1048.5 (1004.5, 1092.6)	2285.5 (2208.6, 2367.4)	1071.6 (1016.6, 1126.6)	887.0 (870.9, 903.1)
Female	49.1 (38.9, 59.5)	318.8 (271.1, 366.5)	673.5 (619.3, 727.6)	965.7 (900.3, 1031.1)	1138.3 (1073.0, 1203.3)	2285.1 (2174.2, 2396.0)	2459.7 (2349.0, 2570.5)	969.3 (945.5, 993.0)	Female	40.2 (31.1, 49.2)	194.1 (156.6, 231.5)	495.0 (447.6, 542.4)	657.6 (582.8, 688.4)	868.2 (811.9, 924.6)	2111.7 (2003.9, 2219.4)	1991.7 (1883.9, 2099.4)	740.5 (719.7, 761.4)
Male	40.2 (31.1, 49.2)	194.1 (156.6, 231.5)	495.0 (447.6, 542.4)	657.6 (582.8, 688.4)	868.2 (811.9, 924.6)	2111.7 (2003.9, 2219.4)	1991.7 (1883.9, 2099.4)	740.5 (719.7, 761.4)	Livingston County	38.4 (25.1, 58.8)	160.0 (114.3, 205.7)	312.3 (262.4, 362.3)	590.6 (465.6, 595.6)	848.2 (770.2, 926.2)	1436.1 (1329.3, 1543.0)	1508.3 (1416.8, 1599.9)	704.4 (677.8, 731.4)
Female	40.2 (31.1, 49.2)	194.1 (156.6, 231.5)	495.0 (447.6, 542.4)	657.6 (582.8, 688.4)	868.2 (811.9, 924.6)	2111.7 (2003.9, 2219.4)	1991.7 (1883.9, 2099.4)	740.5 (719.7, 761.4)	Female	25.5 (19.8, 31.2)	209.2 (136.7, 281.6)	226.9 (171.7, 282.0)	434.3 (412.4, 456.1)	931.0 (822.0, 1040.1)	1503.9 (1353.7, 1654.1)	1783.3 (1652.7, 1913.9)	780.6 (742.8, 818.1)
Male	26.5 (10.8, 42.2)	92.4 (42.2, 142.6)	412.9 (322.4, 503.4)	552.1 (448.9, 655.2)	733.5 (623.9, 843.1)	1298.1 (1150.0, 1446.3)	1110.3 (989.1, 1231.6)	589.9 (553.4, 626.4)	Madison County	46.4 (30.8, 62.0)	212.6 (156.4, 268.7)	723.5 (632.7, 814.3)	1063.0 (954.9, 1171.2)	1146.6 (1048.6, 1244.6)	2329.1 (2175.3, 2483.0)	1902.9 (1788.7, 2021.2)	1023.3 (992.3, 1054.3)
Female	36.7 (16.8, 56.7)	245.7 (160.6, 330.8)	925.4 (779.7, 1071.1)	1056.2 (905.2, 1207.2)	1323.3 (1175.3, 1471.3)	2309.5 (2094.7, 2524.3)	2113.1 (1948.8, 2277.5)	1141.4 (1088.3, 1194.5)	Female	36.7 (16.8, 56.7)	245.7 (160.6, 330.8)	925.4 (779.7, 1071.1)	1056.2 (905.2, 1207.2)	1323.3 (1175.3, 1471.3)	2309.5 (2094.7, 2524.3)	2113.1 (1948.8, 2277.5)	1141.4 (1088.3, 1194.5)
Male	50.1 (27.6, 72.7)	147.9 (81.4, 214.3)	506.6 (399.6, 613.7)	1000.0 (850.1, 1149.9)	895.3 (772.1, 1018.4)	2295.7 (2077.9, 2513.4)	1575.1 (1416.8, 1733.5)	868.7 (821.6, 915.8)	McDonald County	31.5 (22.9, 40.2)	131.8 (99.5, 164.1)	313.5 (271.6, 355.4)	474.5 (418.8, 516.3)	775.9 (716.7, 835.2)	1333.8 (1245.5, 1422.2)	1438.2 (1350.7, 1525.7)	563.9 (544.3, 583.5)
Female	26.8 (15.4, 38.3)	183.8 (128.2, 239.4)	361.0 (297.2, 424.8)	567.5 (497.7, 651.3)	618.3 (519.6, 714.0)	1405.3 (1277.2, 1533.5)	1606.8 (1480.0, 1732.6)	651.4 (621.6, 681.0)	Female	35.9 (23.0, 48.7)	85.6 (49.8, 121.4)	263.8 (209.6, 318.0)	459.8 (299.6, 420.1)	635.7 (560.5, 711.0)	1234.5 (1114.1, 1354.9)	1231.7 (1113.3, 1350.0)	471.3 (446.4, 496.7)
Male	35.9 (23.0, 48.7)	85.6 (49.8, 121.4)	263.8 (209.6, 318.0)	459.8 (299.6, 420.1)	635.7 (560.5, 711.0)	1234.5 (1114.1, 1354.9)	1231.7 (1113.3, 1350.0)	471.3 (446.4, 496.7)	Miller County	29.0 (12.7, 26.8)	155.1 (119.5, 190.6)	246.4 (209.3, 283.4)	317.9 (371.8, 463.9)	555.4 (507.4, 603.4)	1039.1 (968.1, 1110.1)	480.4 (463.0, 497.2)	
Female	20.5 (10.1, 30.9)	195.8 (138.6, 253.0)	264.0 (209.7, 318.2)	516.6 (458.1, 605.1)	616.4 (544.8, 687.9)	1032.3 (932.6, 1132.0)	1181.3 (1088.6, 1274.1)	544.1 (511.9, 576.2)	Female	17.8 (8.5, 27.1)	87.2 (49.9, 124.4)	176.7 (132.2, 221.0)	237.7 (224.6, 330.8)	462.1 (400.2, 524.0)	964.5 (867.4, 1061.6)	844.6 (758.3, 930.9)	381.8 (359.0, 403.8)
Male	17.8 (8.5, 27.1)	87.2 (49.9, 124.4)	176.7 (132.2, 221.0)	237.7 (224.6, 330.8)	462.1 (400.2, 524.0)	964.5 (867.4, 1061.6)	844.6 (758.3, 930.9)	381.8 (359.0, 403.8)	Montgomery County	29.4 (18.8, 42.0)	197.7 (137.5, 256.8)	552.9 (471.9, 638.9)	686.0 (598.5, 773.6)	690.9 (617.2, 764.7)	1552.7 (1431.4, 1673.9)	1399.8 (1302.8, 1496.8)	733.9 (703.5, 764.3)
Female	23.8 (7.3, 40.3)	246.2 (147.7, 344.6)	623.7 (503.8, 743.6)	813.4 (675.6, 941.6)	800.8 (689.0, 912.6)	1777.2 (1591.3, 1963.1)	1461.1 (1328.8, 1593.3)	841.5 (795.8, 887.4)	Female	29.2 (11.9, 46.4)	138.5 (70.6, 206.4)	452.2 (347.0, 557.4)	535.6 (428.4, 642.7)	537.7 (445.3, 630.2)	1320.5 (1164.5, 1476.6)	1313.4 (1171.5, 1455.3)	606.7 (576.7, 645.8)
Male	20.5 (10.1, 30.9)	195.8 (138.6, 253.0)	264.0 (209.7, 318.2)	516.6 (458.1, 605.1)	616.4 (544.8, 687.9)	1032.3 (932.6, 1132.0)	1181.3 (1088.6, 1274.1)	544.1 (511.9, 576.2)	New Madrid County	31.0 (20.7, 41.3)	144.5 (106.3, 182.6)	391.1 (338.5, 443.8)	510.7 (642.5, 778.9)	844.8 (777.2, 912.4)	1448.8 (1354.7, 1542.8)	1534.3 (1446.3, 1622.3)	712.7 (693.1, 741.4)
Female	25.4 (12.1, 38.6)	158.1 (101.5, 214.7)	417.2 (342.2, 492.1)	783.7 (682.6, 884.8)	971.7 (871.5, 1072.0)	1578.0 (1441.8, 1714.1)	1574.0 (1441.1, 1673.8)	795.7 (760.4, 830.9)	Female	25.4 (12.1, 38.6)	158.1 (101.5, 214.7)	417.2 (342.2, 492.1)	783.7 (682.6, 884.8)	971.7 (871.5, 1072.0)	1578.0 (1441.8, 1714.1)	1574.0 (1441.1, 1673.8)	795.7 (760.4, 830.9)
Male	34.7 (19.5, 49.9)	125.7 (75.4, 175.9)	303.8 (236.4, 371.2)	704.1 (665.3, 742.9)	872.5 (832.8, 912.3)	1589.9 (1531.8, 1648.0)	1768.1 (1712.7, 1823.5)	763.8 (749.6, 778.0)	Newton County	30.5 (28.9, 41.0)	186.6 (163.0, 210.3)	508.3 (473.5, 543.0)	783.1 (665.3, 742.9)	872.5 (832.8, 912.3)	1589.9 (1531.8, 1648.0)	1768.1 (1712.7, 1823.5)	763.8 (749.6, 778.0)
Female	38.3 (29.1, 47.4)	219.8 (183.2, 256.3)	480.7 (433.0, 528.5)	704.1 (665.3, 742.9)	872.5 (832.8, 912.3)	1589.9 (1531.8, 1648.0)	1768.1 (1712.7, 1823.5)	763.8 (749.6, 778.0)	Female	38.3 (29.1, 47.4)	219.8 (183.2, 256.3)	480.7 (433.0, 528.5)	704.1 (665.3, 742.9)	872.5 (832.8, 912.3)	1589.9 (1531.8, 1648.0)	1768.1 (1712.7, 1823.5)	763.8 (749.6, 778.0)
Male	29.4 (21.8, 37.0)	138.5 (107.4, 164.1)	481.3 (433.4, 529.3)	566.7 (507.8, 605.6)	749.9 (697.5, 802.4)	1373.4 (1296.8, 1450.1)	1566.4 (1487.9, 1644.9)	635.1 (616.7, 653.5)	Osage County	33.8 (21.5, 46.1)	142.1 (101.0, 183.1)	294.0 (239.3, 348.7)	351.4 (305.9, 407.1)	518.0 (456.6, 579.3)	1017.7 (920.1, 1115.2)	1065.9 (976.2, 1153.8)	439.4 (436.9, 442.0)
Female	33.6 (16.0, 51.2)	187.4 (110.8, 263.9)	412.4 (317.8, 507.0)	511.3 (417.0, 605.6)	472.0 (386.1, 557.9)	992.3 (852.7, 1132.0)	1042.9 (924.5, 1161.3)	499.2 (465.2, 533.1)	Female	33.6 (16.0, 51.2)	187.4 (110.8, 263.9)	412.4 (317.8, 507.0)	511.3 (417.0, 605.6)	472.0 (386.1, 557.9)	992.3 (852.7, 1132.0)	1042.9 (924.5, 1161.3)	499.2 (465.2, 533.1)
Male	34.0 (18.8, 51.2)	109.5 (63.7, 155.2)	189.5 (129.3, 249.8)	214.7 (157.1, 277.6)	543.7 (457.8, 629.6)	1072.0 (924.5, 1229.5)	1042.9 (924.5, 1161.3)	499.2 (465.2, 533.1)	Pemiscot County	30.2 (20.6, 39.8)	193.1 (148.6, 234.0)	622.6 (554.9, 690.3)	914.2 (833.2, 995.1)	1357.9 (1267.5, 1448.3)	2459.6 (2327.8, 2591.3)	1974.0 (1867.9, 2080.1)	1075.4 (1047.1, 1104.4)
Female	32.3 (18.1, 46.5)	200.0 (139.5, 260.5)	690.9 (593.9, 787.8)	1069.3 (947.7, 1190.9)	1484.2 (1353.0, 1615.3)	2356.5 (2178.2, 2534.8)	2007.6 (1867.8, 2147.4)	975.0 (945.5, 1066.3)	Female	30.2 (20.6, 39.8)	193.1 (148.6, 234.0)	622.6 (554.9, 690.3)	914.2 (833.2, 995.1)	1357.9 (1267.5, 1448.3)	2459.6 (2327.8, 2591.3)	1974.0 (1867.9, 2080.1)	1075.4 (1047.1, 1104.4)
Male	26.6 (14.0, 39.2)	176.6 (117.3, 236.0)	529.7 (437.6, 621.8)	720.2 (616.7, 823.7)	1211.4 (1088.2, 1334.7)	2530.4 (2336.7, 2724.0)	1912.1 (1749.8, 2074.4)	885.0 (845.1, 924.6)	Perry County	31.0 (21.8, 42.1)	235.8 (186.2, 285.3)	376.4 (326.0, 426.9)	570.3 (506.8, 627.9)	595.3 (537.9, 652.7)	976.1 (896.2, 1056.1)	1098.6 (1023.1, 1174.2)	518.5 (501.2, 542.4)
Female	12.2 (3.1, 21.2)	314.3 (231.2, 397.3)	470.2 (389.3, 551.0)	607.2 (517.7, 696.7)	603.6 (521.8, 685.4)	1157.1 (1033.5, 1280.6)	1083.8 (984.3, 1183.2)	576.7 (546.7, 607.2)	Female	12.2 (3.1, 21.2)	314.3 (231.2, 397.3)	470.2 (389.3, 551.0)	607.2 (517.7, 696.7)	603.6 (521.8, 685.4)	1157.1 (1033.5, 1280.6)	1083.8 (984.3, 1183.2)	576.7 (546.7, 607.2)
Male	48.4 (34.6, 66.3)	149.6 (107.8, 222.1)	256.8 (198.7, 315.0)	439.7 (364.9, 514.4)	558.3 (479.7, 636.8)	798.4 (683.5, 885.4)	1096.3 (981.5, 1211.2)	442.2 (415.4, 469.0)	Pettis County	36.4 (29.2, 43.5)	208.2 (179.8, 236.6)	448.8 (412.8, 484.7)	681.1 (558.0, 644.4)	682.1 (640.8, 723.5)	1297.9 (1233.6, 1362.3)	1384.5 (1325.9, 1443.1)	607.0 (592.9, 621.9)
Female	29.4 (20.1, 38.6)	209.4 (169.3, 249.4)	422.0 (372.4, 471.6)	588.1 (527.6, 649.4)	602.4 (547.3, 657.6)	1211.4 (1123.8, 1298.9)	1282.2 (1207.9, 1356.5)	581.9 (561.5, 602.3)	Female	36.4 (29.2, 43.5)	208.2 (179.8, 236.6)	448.8 (412.8, 484.7)	681.1 (558.0, 644.4)				