



MAPP Kick-Off/Visioning Meeting

St. Charles City-County Library,

Spencer Road Branch

January 17, 2019

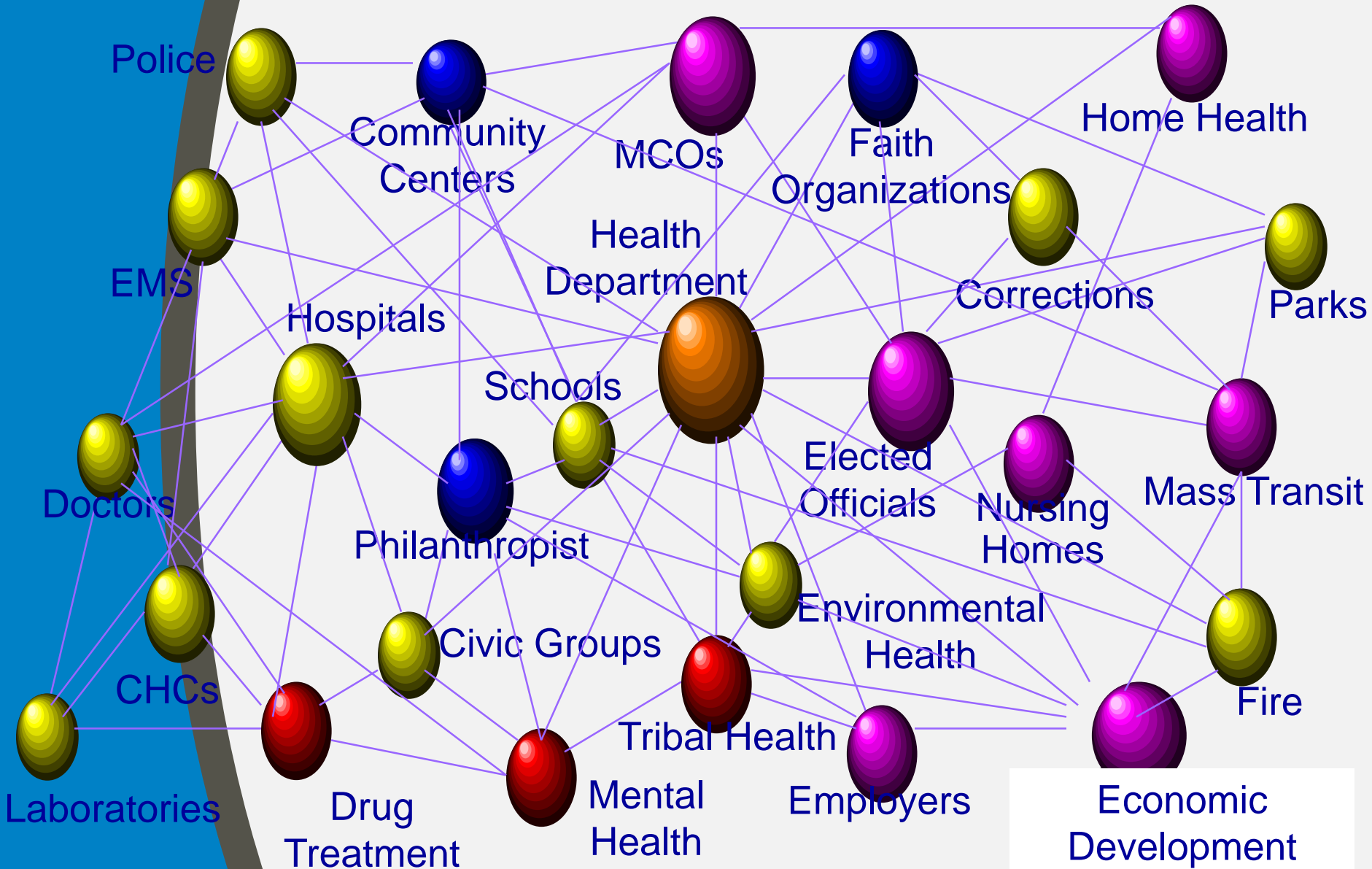
Jessica Berkemeier, MPH

Samantha VanNatta, MPH

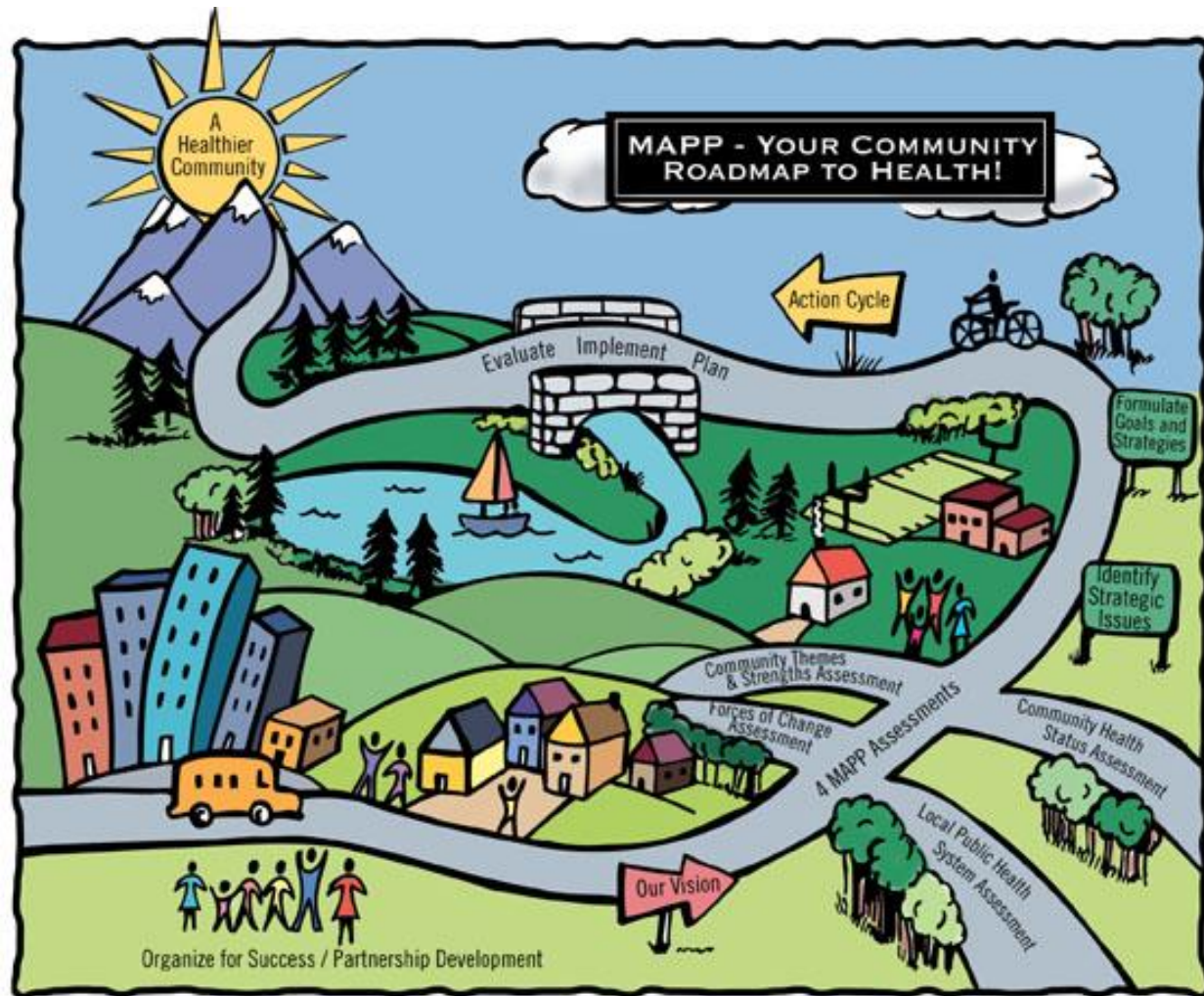
Agenda

- 8:30 Eat, Greet, Wander
- 8:45 Introduction to MAPP
- 9:00 Community Vision Exercise-Small Group
- 9:30 Community Vision Exercise- Large Group
- 10:00 Session Summary and Next Steps
- 10:30 Adjourn

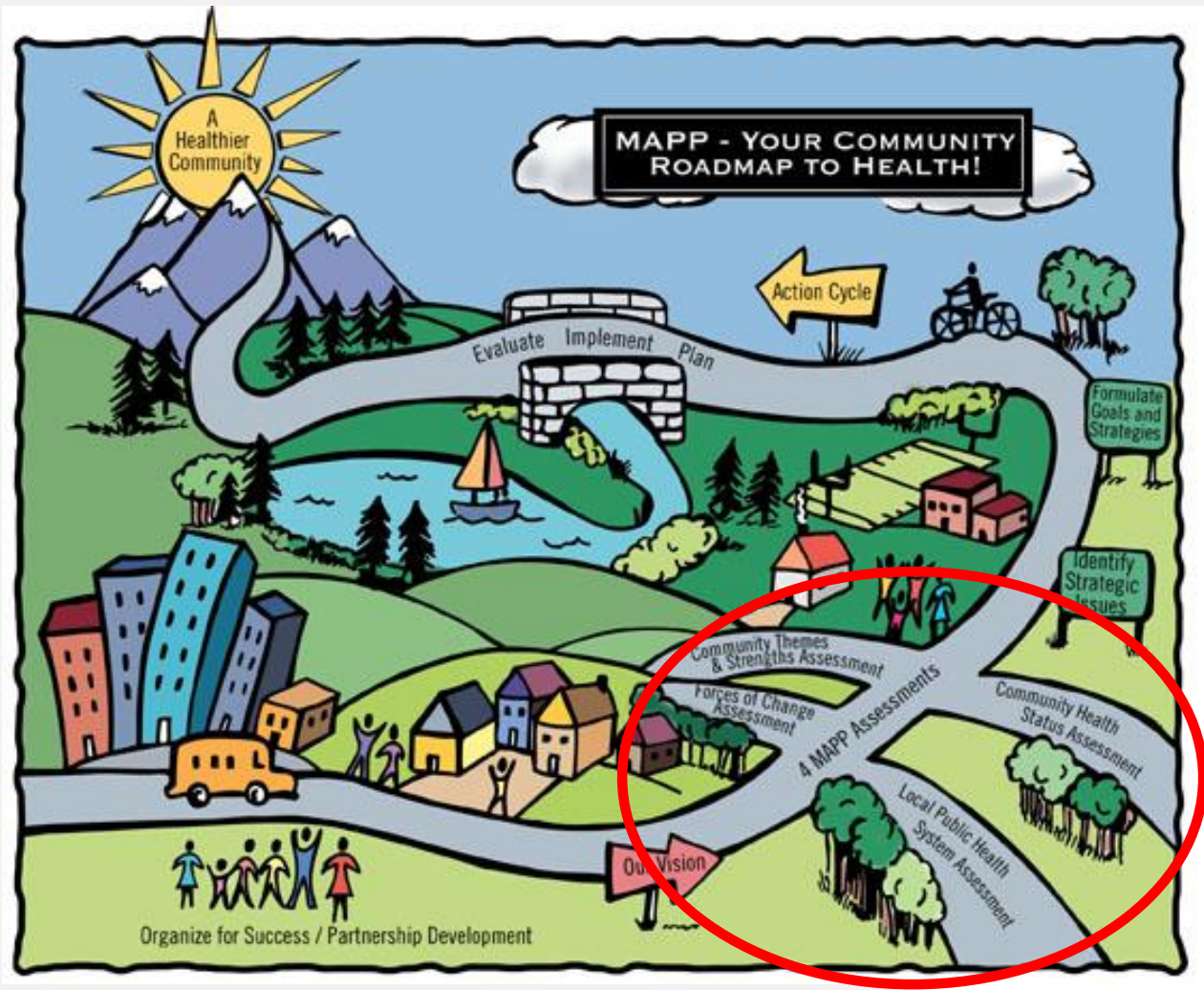
Local Public Health System



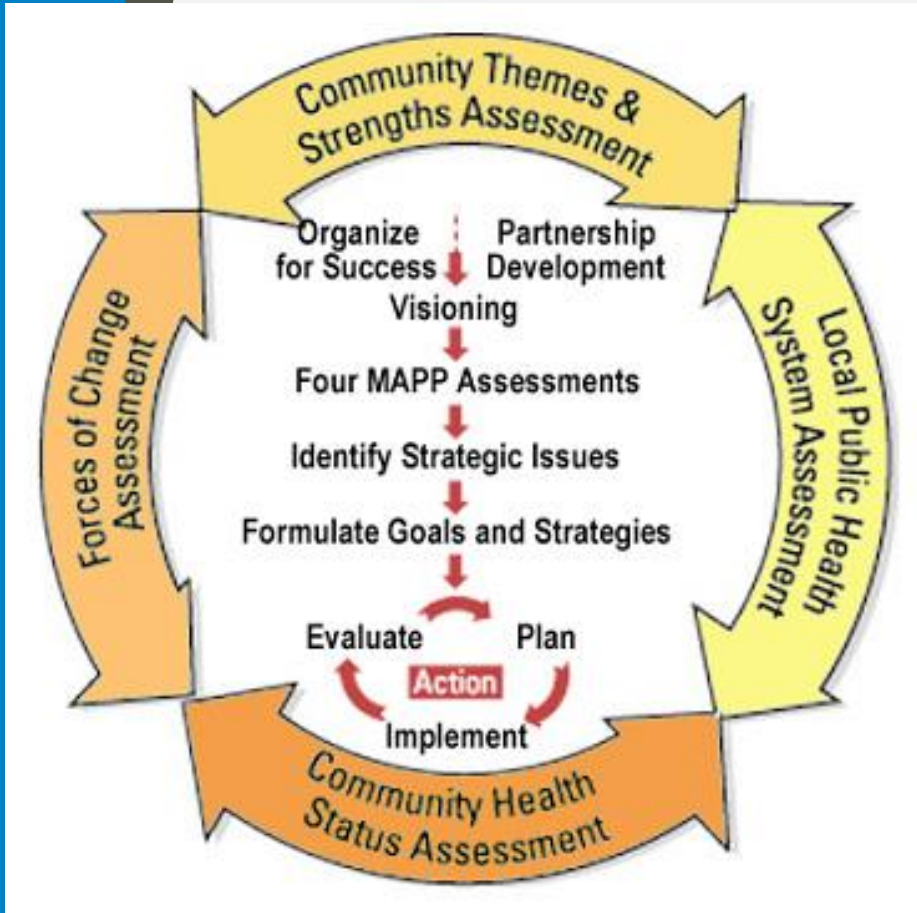
Mobilizing for Action through Planning and Partnerships



Mobilizing for Action through Planning and Partnerships



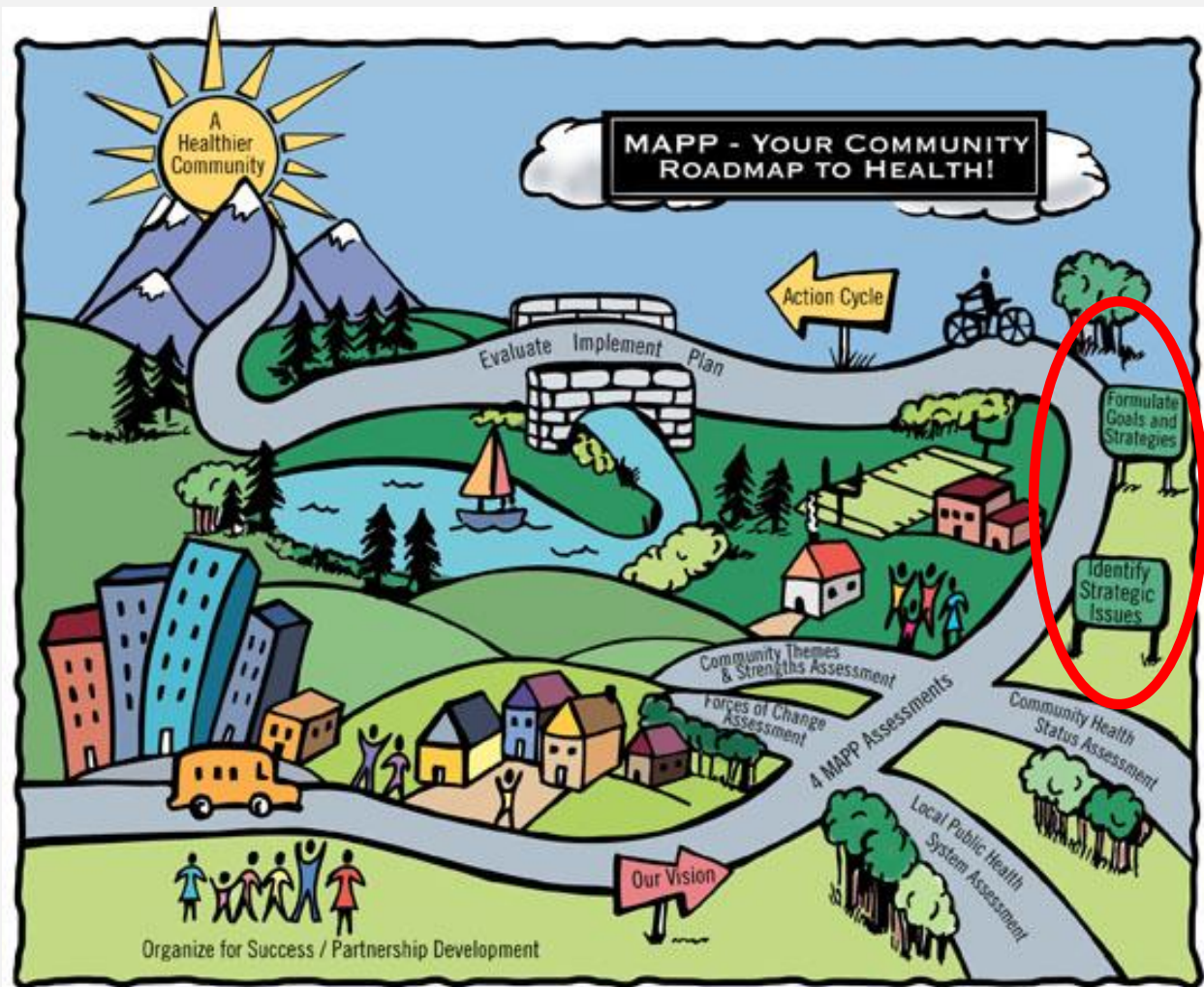
Four MAPP Assessments



1. Community Themes and Strengths
 - Meeting #2
 - Quality of Life
 - Asset Mapping
2. Local Public Health System
 - Emailed to participants in Feb.
3. Community Health Status
 - Data collection and sharing
4. Forces of Change
 - Meeting #3
 - Legislation/Technology
 - Threats and Opportunities

Community Health Survey

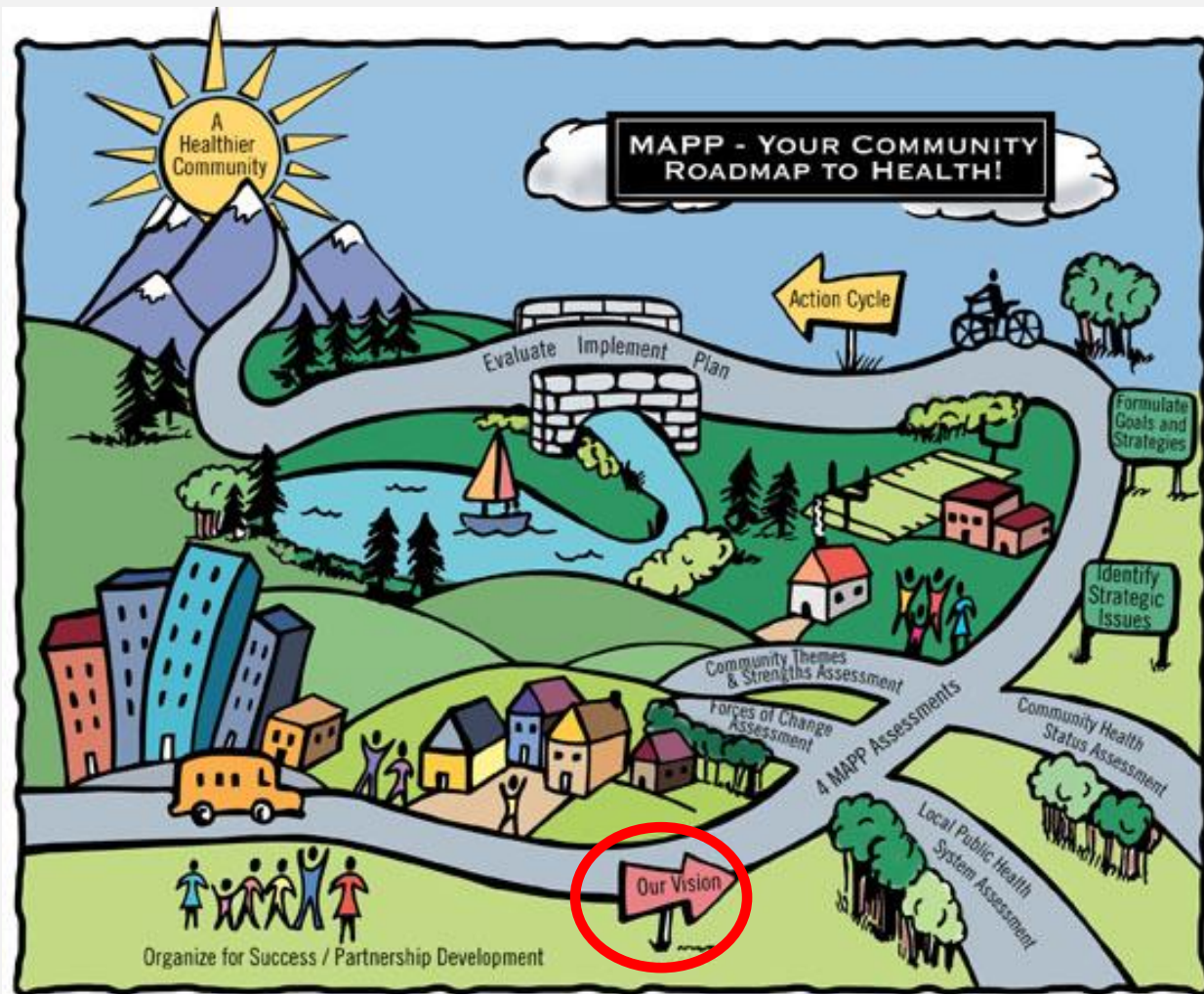
Mobilizing for Action through Planning and Partnerships



Strategic Issues and Goals



Mobilizing for Action through Planning and Partnerships



Vision Statement

“The purpose of the Vision Session is to guide the community through a collaborative, creative process that leads to a shared community vision and common values.” – NACCHO

Focus

Purpose

Direction

Community Vision Exercise

- What does a healthy St. Charles County mean to you?
- What are important characteristics of a healthy community for all who live, work, and play here?
- Who is responsible for keeping St. Charles County healthy?
- How do you envision the local public health system in the next five or ten years?

Community Values Exercise

- What are the **key behaviors** that will be required of the local public health system partners, the community, and others in the next 5-10 years to achieve the vision?
- What type of working environment or climate is necessary to support participants in performing the above behaviors and in achieving the vision.

Summary and Next Steps

- Finalizing Vision Statement
- Community Health Survey
- Meeting Evaluation

- Meeting Locations for:
 - March
 - April
 - May

Meeting #2

February 2019 @ Lindenwood University

Community Themes and Strengths

- "What is important to the community"
- "How is quality of life perceived in the community?"
- "What assets does the community have that can be used to improve community health?"

LOCAL PUBLIC HEALTH SYSTEM ASSESSMENT
(emailed to group)

MAPP Website

<https://www.sccmo.org/mapp>

Community Health Survey:

Open to all residents of St. Charles County until
3/30/2019.

Please distribute within your organizations and
community groups!

Our goal is 1,000 survey responses!