



Meeting #3

Forces of Change

Sts. Joachim and Ann Care Service,

St. Charles, MO

March 28, 2019

Jessica Berkemeier, MPH

Samantha VanNatta, MPH

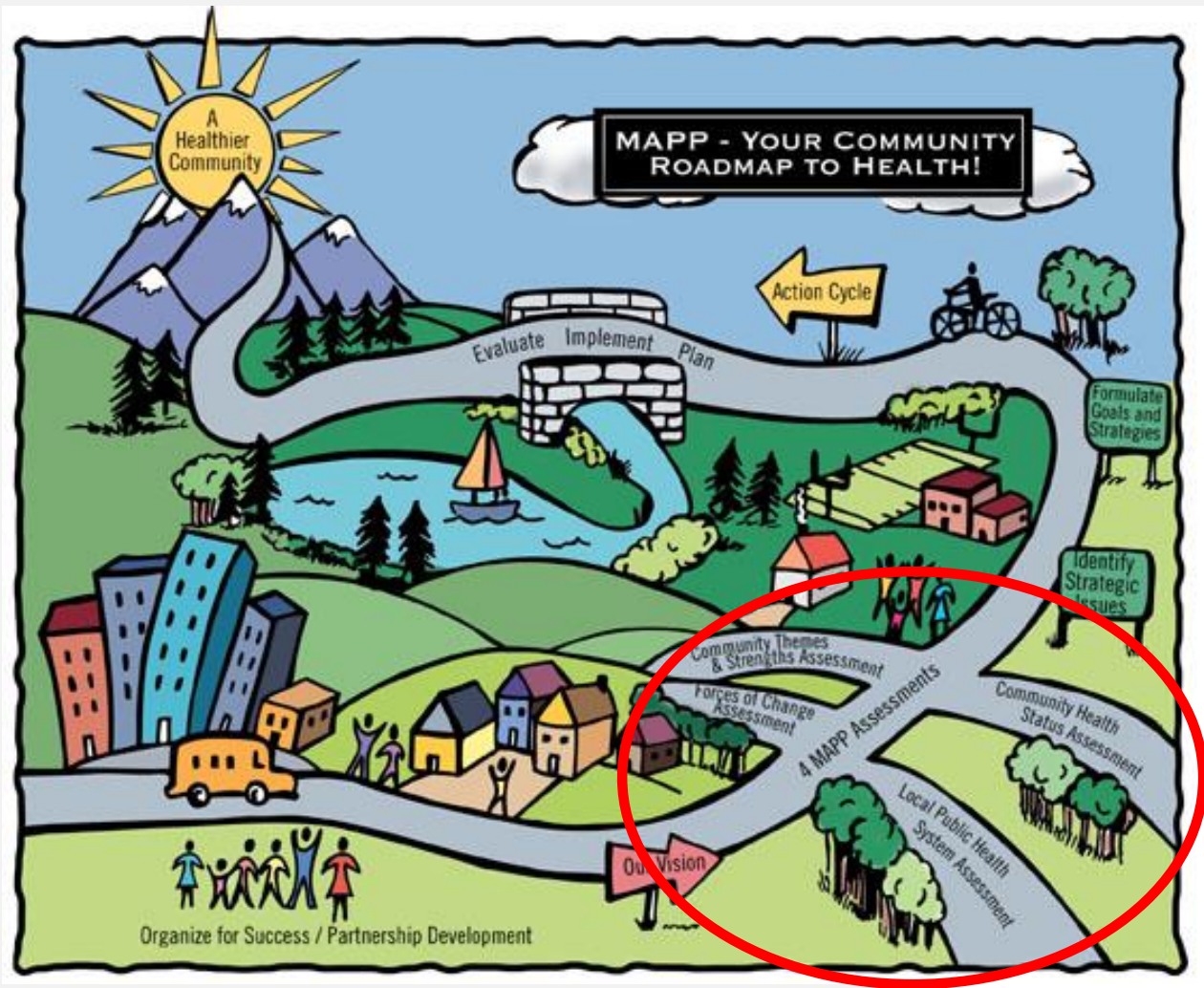
Agenda

- 8:30 Eat, Greet, Wander
- 8:40 Welcome and Introduction
- 8:45 Local Public Health Assessment Discussions
- 9:20 Forces of Change Assessment- Small Group
- 9:50 Forces of Change Assessment- Large Group
- 10:10 Session Summary and Next Steps
- 10:30 Adjourn

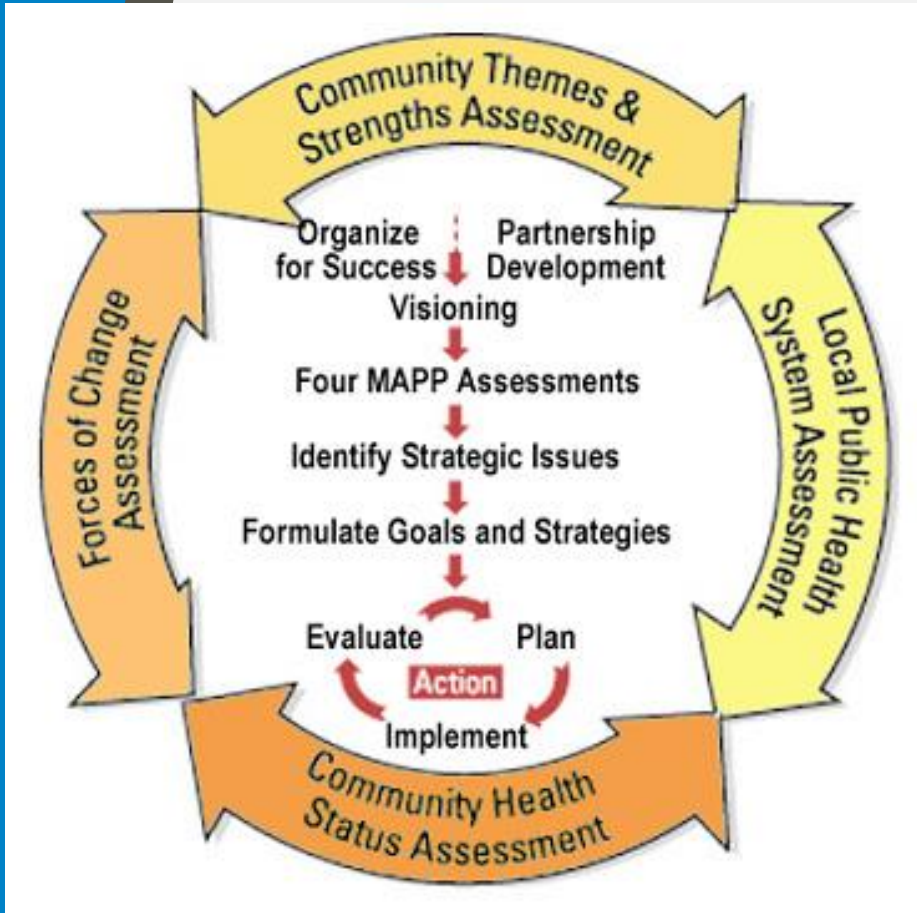
Vision

A healthy life for everyone driven by a unified St. Charles County that is committed to a culture of health in which everybody thrives across all phases of life.

Mobilizing for Action through Planning and Partnerships



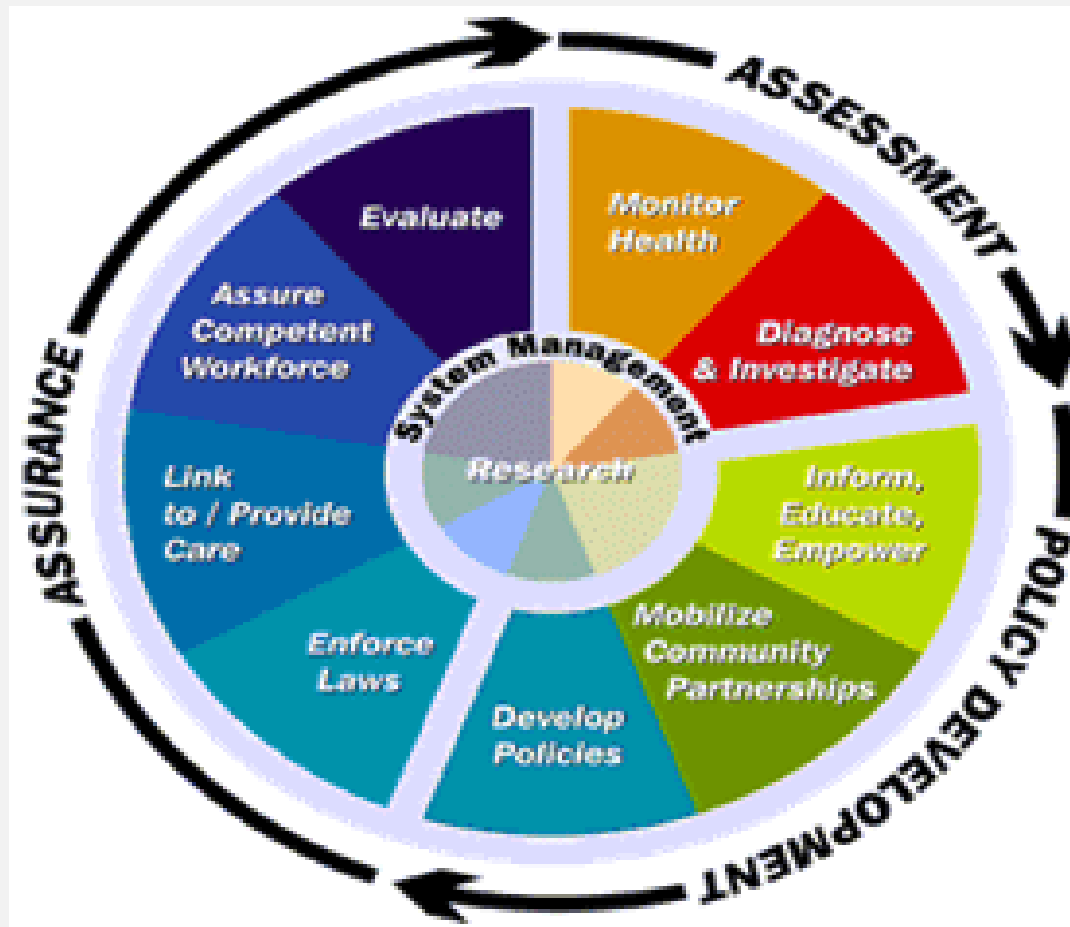
Four MAPP Assessments



1. Community Themes and Strengths
 - Quality of Life
 - Asset Mapping
2. Local Public Health System
3. Community Health Status
 - Data collection and sharing
4. Forces of Change
 - Legislation/Technology
 - Threats and Opportunities

Community Health Survey

Local Public Health System Assessment



Local Public Health System Assessment

ESSENTIAL SERVICE 1: Monitor Health Status to Identify Community Health Problems

1.1	Model Standard: Population-Based Community Health Assessment (CHA) At what level does the local public health system:	
1.1.1	Conduct regular community health assessments?	SELECT
1.1.2	Continuously update the community health assessment with current information?	SELECT

Optimal Activity (76-100%)

Significant Activity (51-75%)

Moderate Activity (26-50%)

Minimal Activity (1-25%)

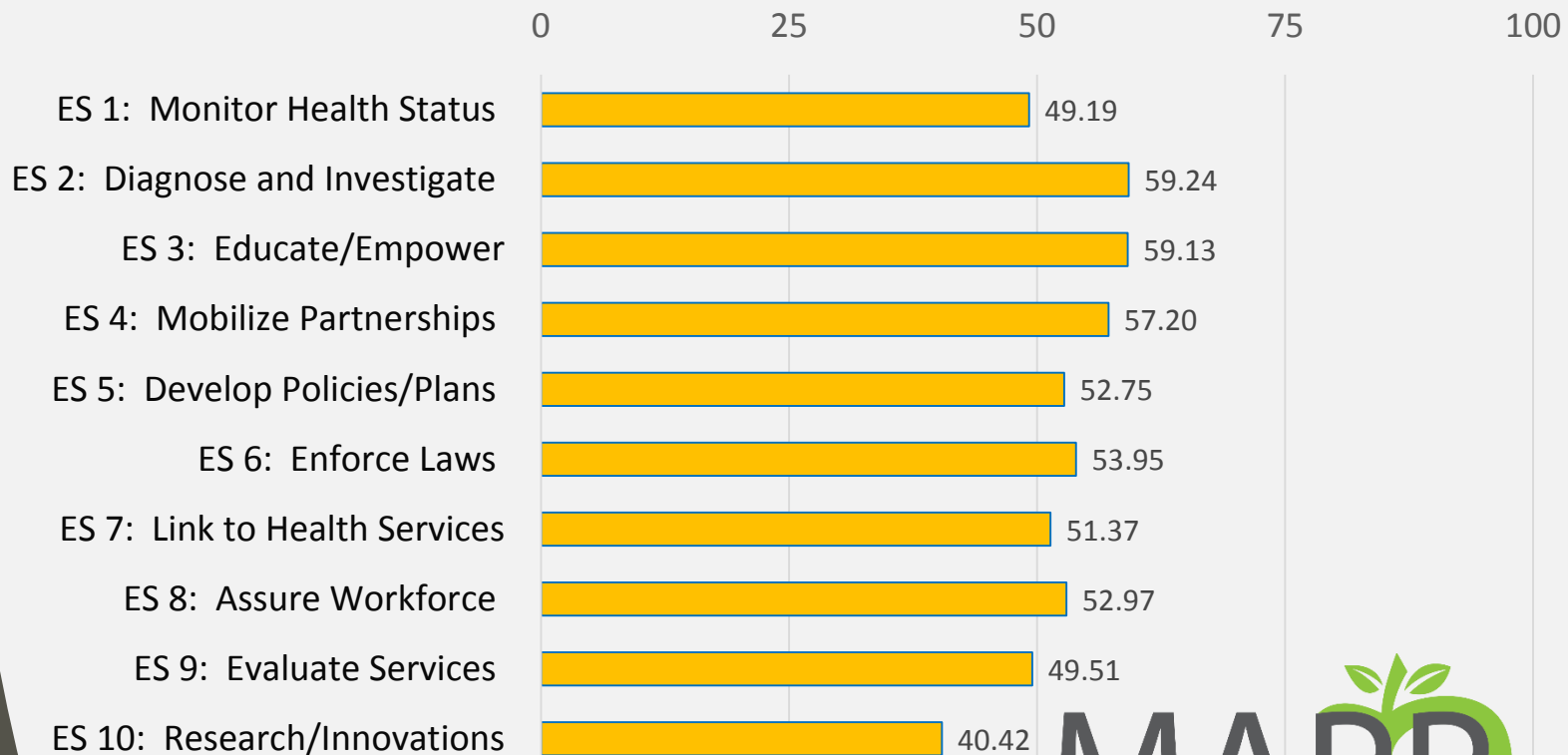
No Activity (0%)

LPHSA Results

- Thank you to everyone that responded, we received 13 assessments* back!
- St. Charles County Department of Public Health
- Francis Howell School District
- Megan Meier foundation
- The Sparrow's Nest Maternity Home
- Lindenwood University
- Lutheran Family and Children's Services of Missouri
- St. Charles City School District
- Community Council
- St. Charles County Ambulance District
- Epworth Children & Family Services
- BJC

LPHSA Results

Overall Performance by Essential Public Health Service



LPHSA Results

ES2: Diagnose and Investigate:

- Identification/Surveillance
- Emergency Response

ES3: Educate/Empower:

- Health Education/
Promotion

**Significant Activity:
51%-75%**

ES8: Assure Workforce:

- Workforce Assessment

ES10: Research/Innovations:

- Academic Linkages
- Research Capacity

**Moderate Activity:
26%-50%**

Local Public Health System Assessment Results

- Successes, where do we need to maintain efforts or where we can cut back our resources
- Challenges, where we might need to increase activity, and where we require increased coordination

Forces of Change Assessment

- What is occurring or might occur that affects the health of the community or the local public health system?
- What specific threats or opportunities are generated by these occurrences?

Forces of Change Assessment

- **What are Forces of Change?**

Forces of Change include trends, events, and factors.

- Trends are patterns over time
 - Migration in and out of the community
- Factors are discrete elements
 - Urban setting, proximity to a major waterway
- Events are one time occurrences
 - Hospital closure, a natural disaster, passage of new legislation

Trends

Home foreclosures

Unemployment rate

Wealth and educational inequities

Aging population

Factors

Prevalence of teen pregnancy

Declining funding

Prevalence of obesity

Intergenerational issues

Slow economy

Events

9/11 Attack on World Trade Center

Hurricane Katrina

Enron

Housing Market Crash

Forces of Change Assessment

1. Flip charts for each category will be placed at each table.
2. Divide into small groups (5-6 people)
3. Each small group brainstorms and lists relevant forces of influence and accompanying threats and opportunities.
4. Move clockwise around the room to next category of influence & add to previous group's ideas.
5. Review all and vote for the top 5 forces.

Summary and Next Steps

- Summarize the results of all 4 assessments
- Community Health Survey closes in 3 days!
- Meeting Locations for:
 - April 17th Centerpointe Hospital
 - May 23rd University of Missouri Extension Office

Meeting #4

April 17thth 2019

@ CenterPointe Hospital Gymnasium

8:30 AM-10:30AM

Community Health Status Assessment results

Community Themes and Strengths Assessment

Identify Strategic Issues

- Identify 3-5 issues that the local public health system and partners can work on in the next 5 years

MAPP Website

<https://www.sccmo.org/mapp>

Community Health Survey:

Open to all residents of St. Charles County until
3/31/2019.

Please distribute within your organizations and
community groups!

Our goal is 1,000 survey responses!