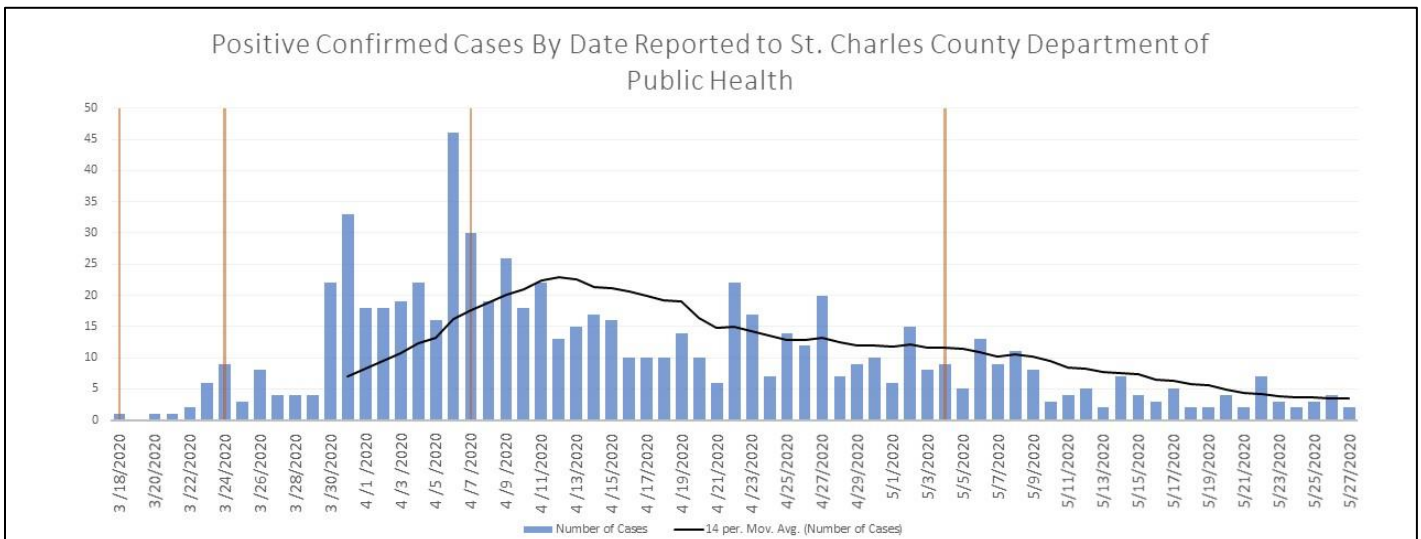
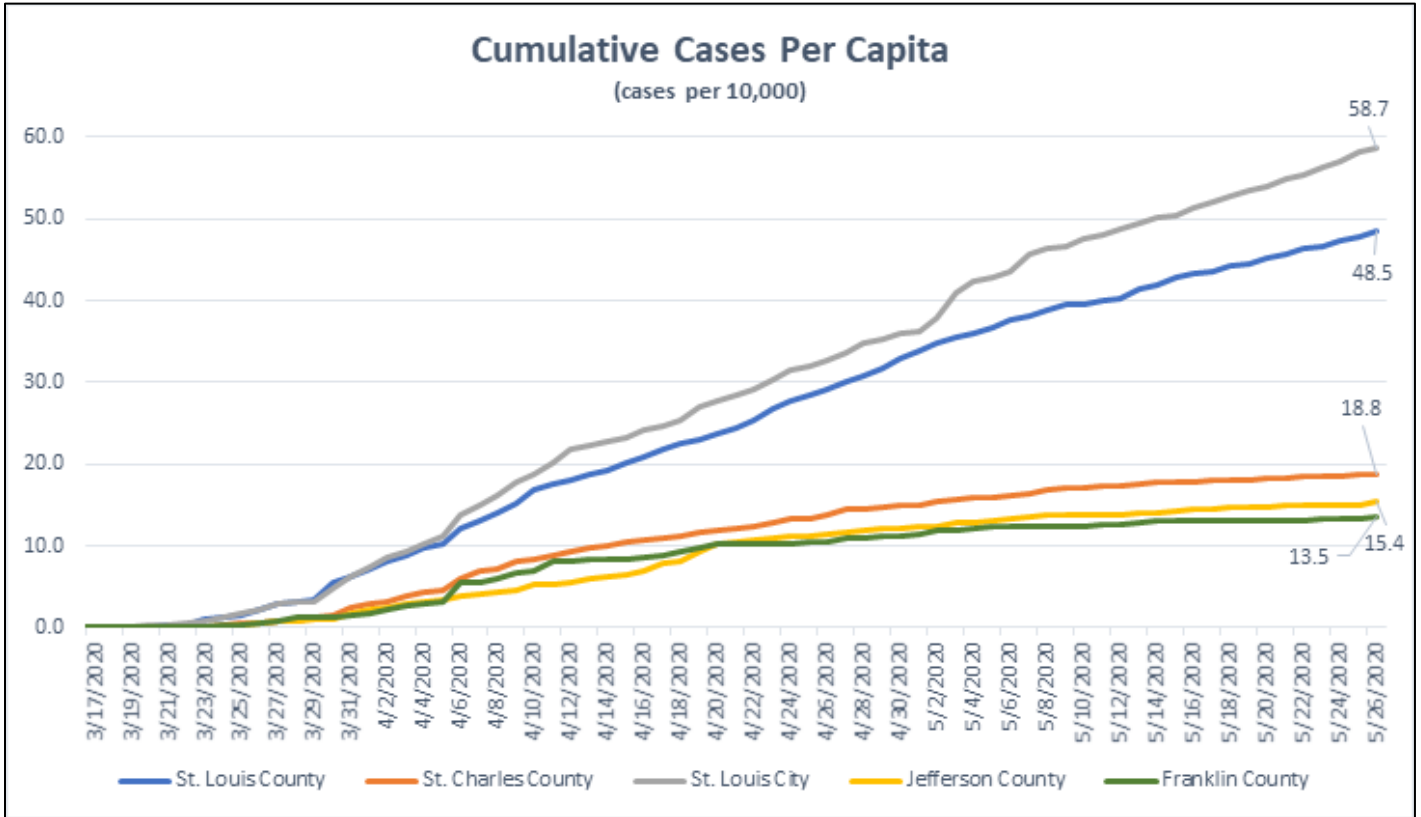


**County Executive Blog**  
**COVID-19, Orders, and Our Community - Graphs**



The above is the number of lab-confirmed cases reported to the St. Charles County Department of Public Health.

**Important Dates:**

- 03/13/2020:** County declared State of Emergency
- 03/16/2020:** Prohibited gatherings 50 or more
- 03/17/2020:** Closure of places of public accommodation; restaurants, bars, coffee places, etc.
- 03/18/2020:** Prohibited gatherings of 10 or more
- 4/7/20:** 14 days after SCC Stay at Home Order
- 5/4/20:** Show Me Recovery; State Re-Opens, County Executive Order Lifted

# St. Charles County

## Retail & recreation

**-38%** compared to baseline



## Workplace

**-30%** compared to baseline



# St. Louis County

## Retail & recreation

**-41%** compared to baseline



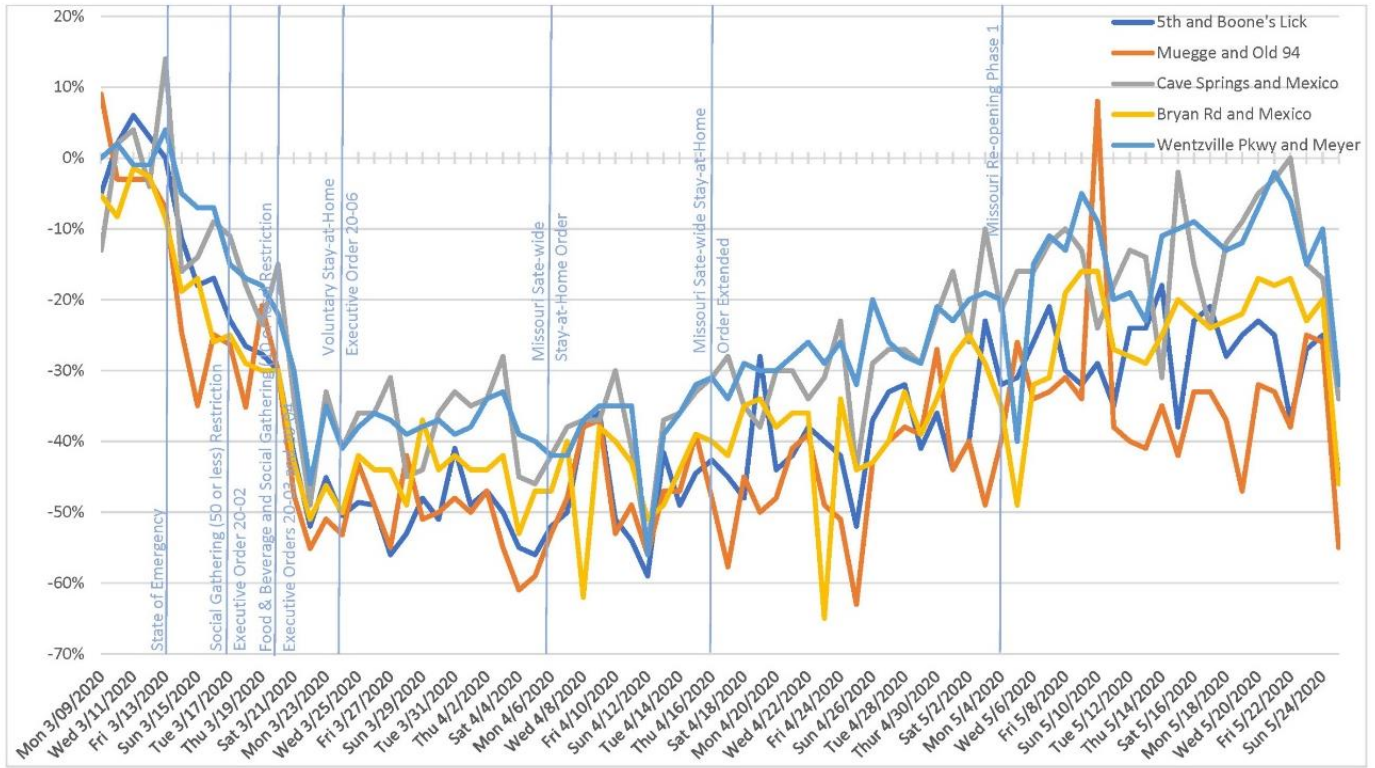
## Workplace

**-32%** compared to baseline

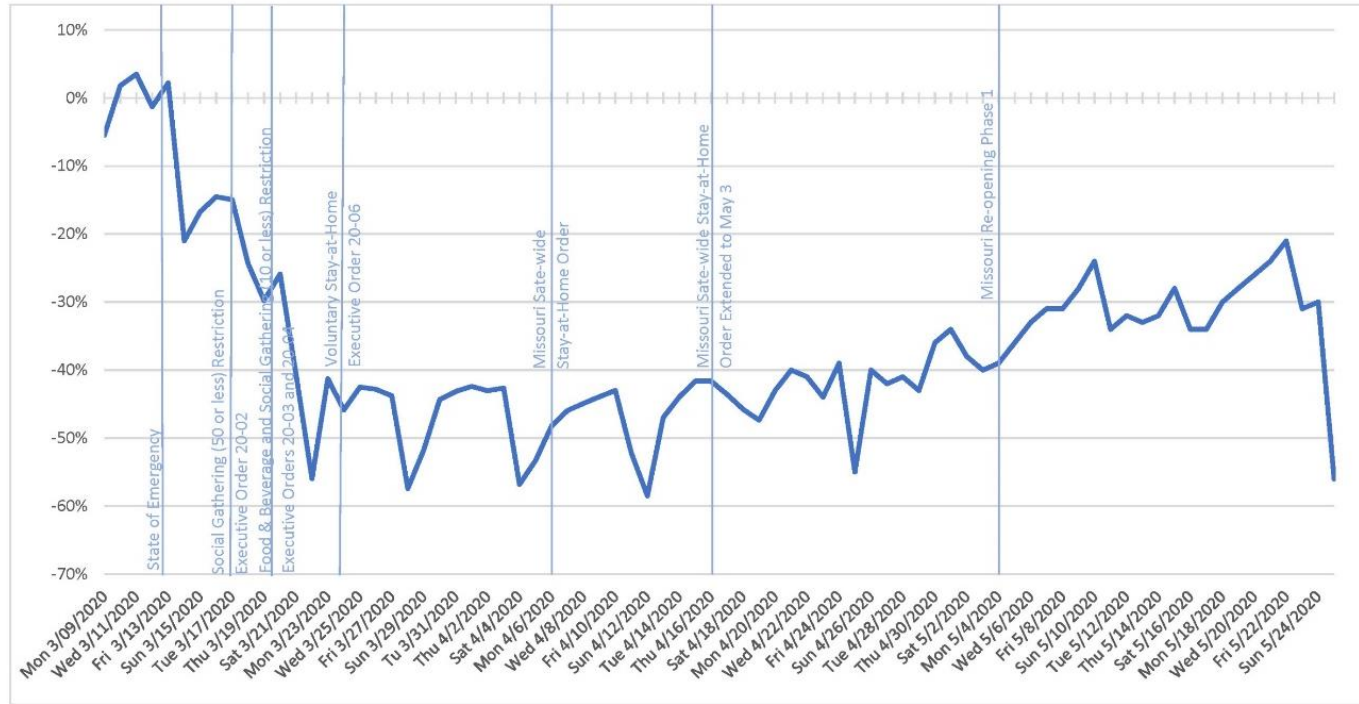


Source: Google LLC "Google COVID-19 Community Mobility Reports."  
<https://www.google.com/covid19/mobility/>

### LOCAL % REDUCTION IN TRAFFIC VOLUMES



### RIVER CROSSING % REDUCTION IN TRAFFIC VOLUMES



If you have questions about COVID-19, [visit the Department of Public Health's website](#) or call the Information Hotline at 636-949-1899.