

This road project paid in part through the
St. Charles County ½ Cent Transportation Sales Tax.

DAVID HOEKEL PARKWAY PHASE 1

Project Location:

New David Hoekel Parkway north-south connection from Interstate Drive to South Point Prairie and a new Interstate Drive east-west connection from South Point Prairie to David Hoekel Parkway

Project Description:

This project extended Interstate Drive from South Point Prairie Road to David Hoekel Parkway. This new east-west portion of Interstate Drive provides for two 12-foot lanes with 6-foot shoulders and 5-foot-wide sidewalks along both sides of the road. The connection to the new Dave Hoekel Parkway roadway will provide access to the new interchange on I-70 recently constructed by the City of Wentzville. This project also extended David Hoekel Parkway to the south of Interstate Drive to connect to South Point Prairie Road at a realigned intersection with Peruque Valley Park Drive. This portion of David Hoekel Parkway provides for two 12-foot lanes with shoulders. The road was widened at the intersections with Interstate Drive and South Point Prairie Road to provide for left turn lanes and included a new bridge over Peruque Creek.

Project Status: Construction completed

Original Project Funding:

TOTAL	County	Sponsor	Federal	Other
\$5,450,000	\$5,450,000	\$0	\$0	\$0

Final Project Total: \$5,461,257

Final County Contribution: \$5,461,257

Completion Year: 2021

Contact: County Highway

Phone: 636-949-7305

Email: highway@sccmo.org

Website: www.sccmo.org/233/Highway

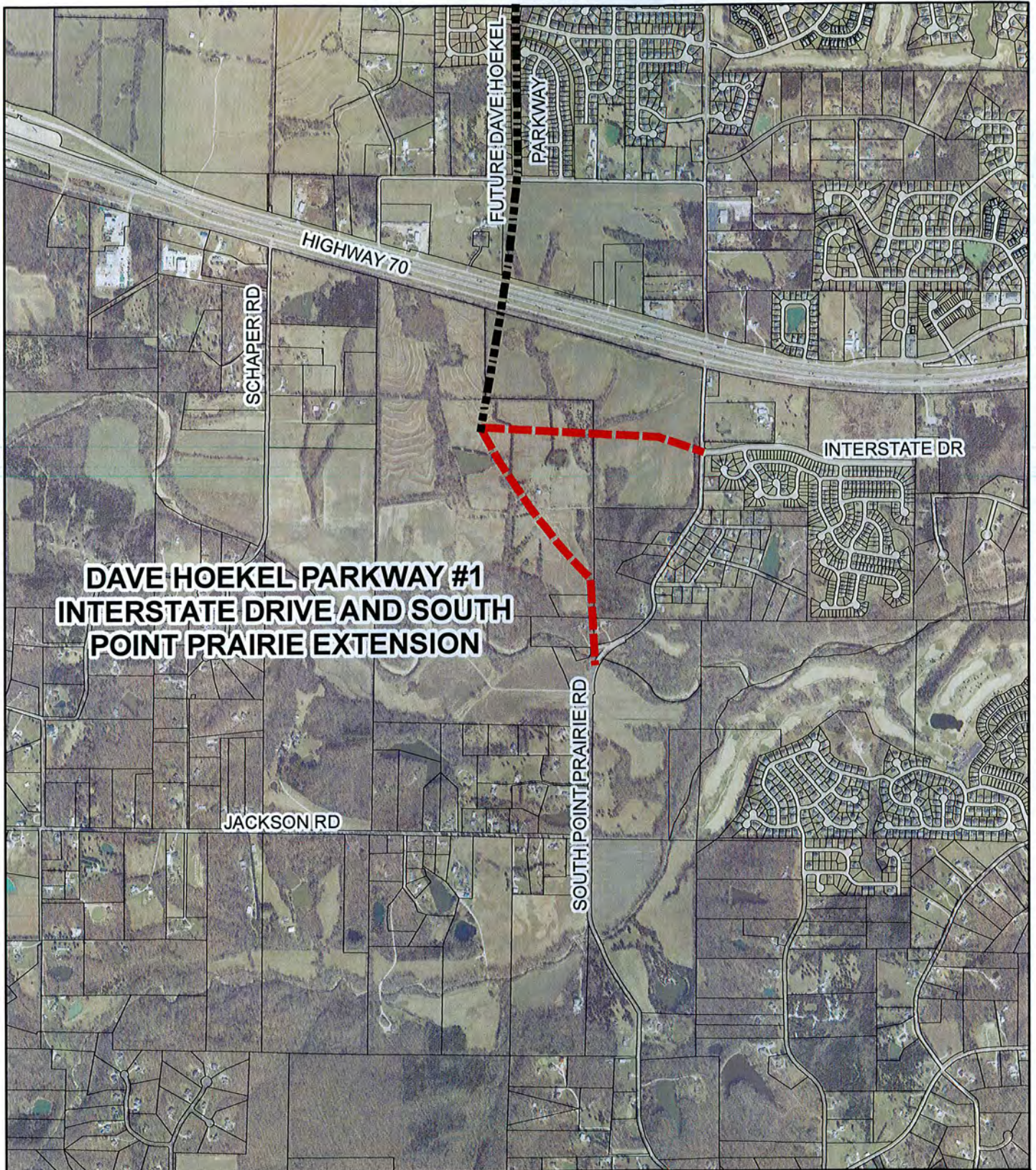
Update: 6/8/2022

**DAVE HOEKEL PARKWAY #1
INTERSTATE DRIVE AND SOUTH
POINT PRAIRIE EXTENSION**

**DAVE HOEKEL PARKWAY #2
SOUTH POINT PRAIRIE AND
BUCKNER ROAD REALIGNMENT**

**DAVE HOEKEL PARKWAY #3
BUCKNER ROAD EXTENSION
TO ROUTE N**

**DAVE HOEKEL PARKWAY #4
ROUTE N AND HOPEWELL ROAD
INTERSECTION**



**DAVE HOEKEL PARKWAY #1
INTERSTATE DRIVE AND SOUTH
POINT PRAIRIE EXTENSION**

**DAVE HOEKEL PARKWAY #1
INTERSTATE DRIVE AND SOUTH
POINT PRAIRIE EXTENSION**
PROJECT LENGTH: 1.14 MILES

