

This road project paid in part through the
St. Charles County ½ Cent Transportation Sales Tax.

HERITAGE CROSSING RAMPS ON ROUTE 364

Project Location:

New ramps between Jungs Station Road and Heritage Crossing to connect to North and South St. Peters Parkway

Project Description:

This project added two new slip ramps on Route 364 between North and South St. Peters Parkway to improve connectivity between Heritage Crossing and the freeway. The westbound on-ramp is a parallel-type acceleration lane that allows vehicles access to Route 364 from Heritage Crossing. The eastbound off-ramp is also a parallel-type deceleration lane on Route 364 beginning just after Jungs Station Road to allow access to the Heritage Crossing overpass. Due to the close proximity of the outer roads, the new concrete slip ramps were installed with guardrail. To properly handle drainage, the eastbound off-ramp provided for drainage inlets in the outside shoulder and the westbound on-ramp maintained open drainage between the ramp and Route 364.

Project Status: Construction completed

Original Project Funding:

TOTAL	County	Sponsor	Federal	Other
\$2,808,000	\$1,404,000	\$0	\$1,404,000	\$0

Final Project Total: \$1,696,205

Final County Contribution: \$961,467

Completion Year: 2021

Contact: County Highway

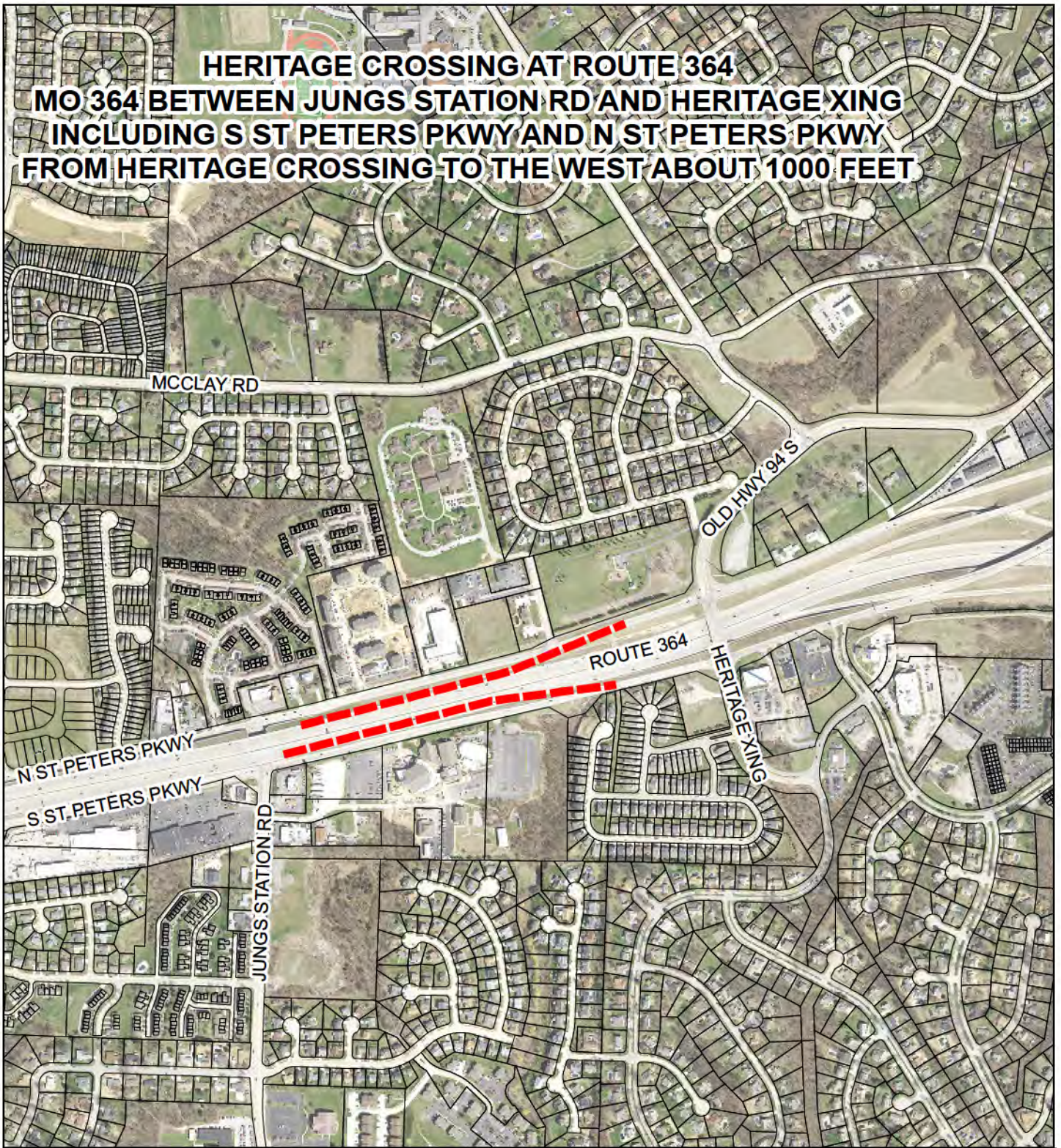
Phone: 636-949-7305

Email: highway@sccmo.org

Website: www.sccmo.org/233/Highway

Update: 6/8/2022

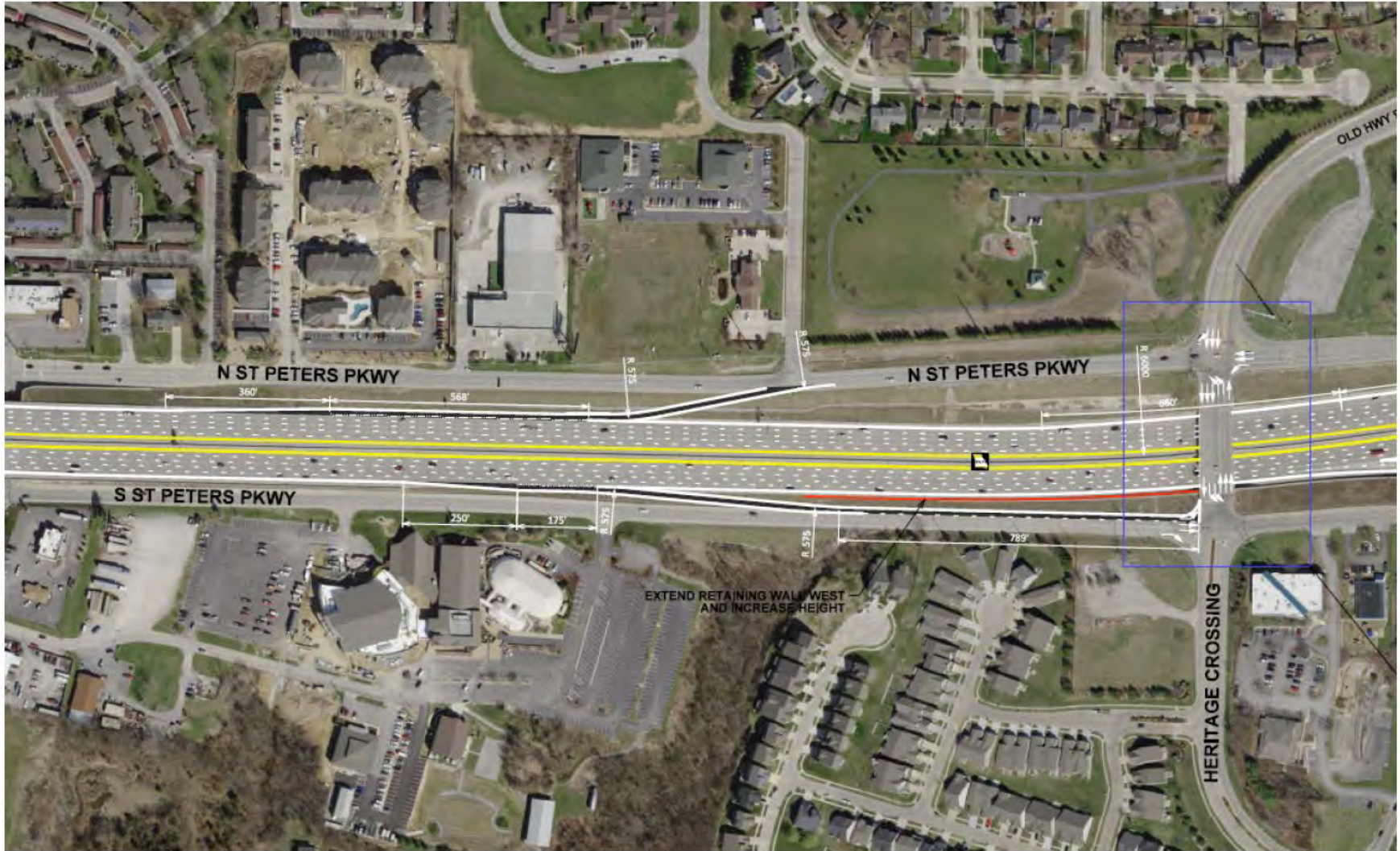
HERITAGE CROSSING AT ROUTE 364
MO 364 BETWEEN JUNGS STATION RD AND HERITAGE XING
INCLUDING S ST PETERS PKWY AND N ST PETERS PKWY
FROM HERITAGE CROSSING TO THE WEST ABOUT 1000 FEET



HERITAGE CROSSING AT ROUTE 364
MO 364 BETWEEN JUNGS STATION RD AND HERITAGE XING
INCLUDING S ST PETERS PKWY AND N ST PETERS PKWY
FROM HERITAGE XING TO THE WEST ABOUT 1000 FEET

PROJECT LENGTH = 0.19 MILES





Proposed Improvements