

This road project paid in part through the  
St. Charles County ½ Cent Transportation Sales Tax.

## ROUTE N & PERRY CATE BOULEVARD TRAFFIC SIGNAL

### Project Location:

Intersection of Route N and Perry Cate Boulevard

### Project Description:

This project installed a new traffic signal at the intersection of Route N and Perry Cate Boulevard. A traffic study analysis was performed and determined a traffic signal was warranted at this intersection. Heavy congestion during peak periods due to the close proximity of the Stone Meadows Subdivision, Timberland High School, Wentzville South Middle School and Boone Trail Elementary School provided the warrants needed to install a signal. The new signal provides for protected turning movements and included intersection lighting.

**Project Status:** Construction Completed

### Original Project Funding:

TOTAL	County	Sponsor	Federal	Other
\$461,000	\$230,500	\$230,500	\$0	\$0

**Final County Contribution:** \$135,504

**Completion Year:** 2019

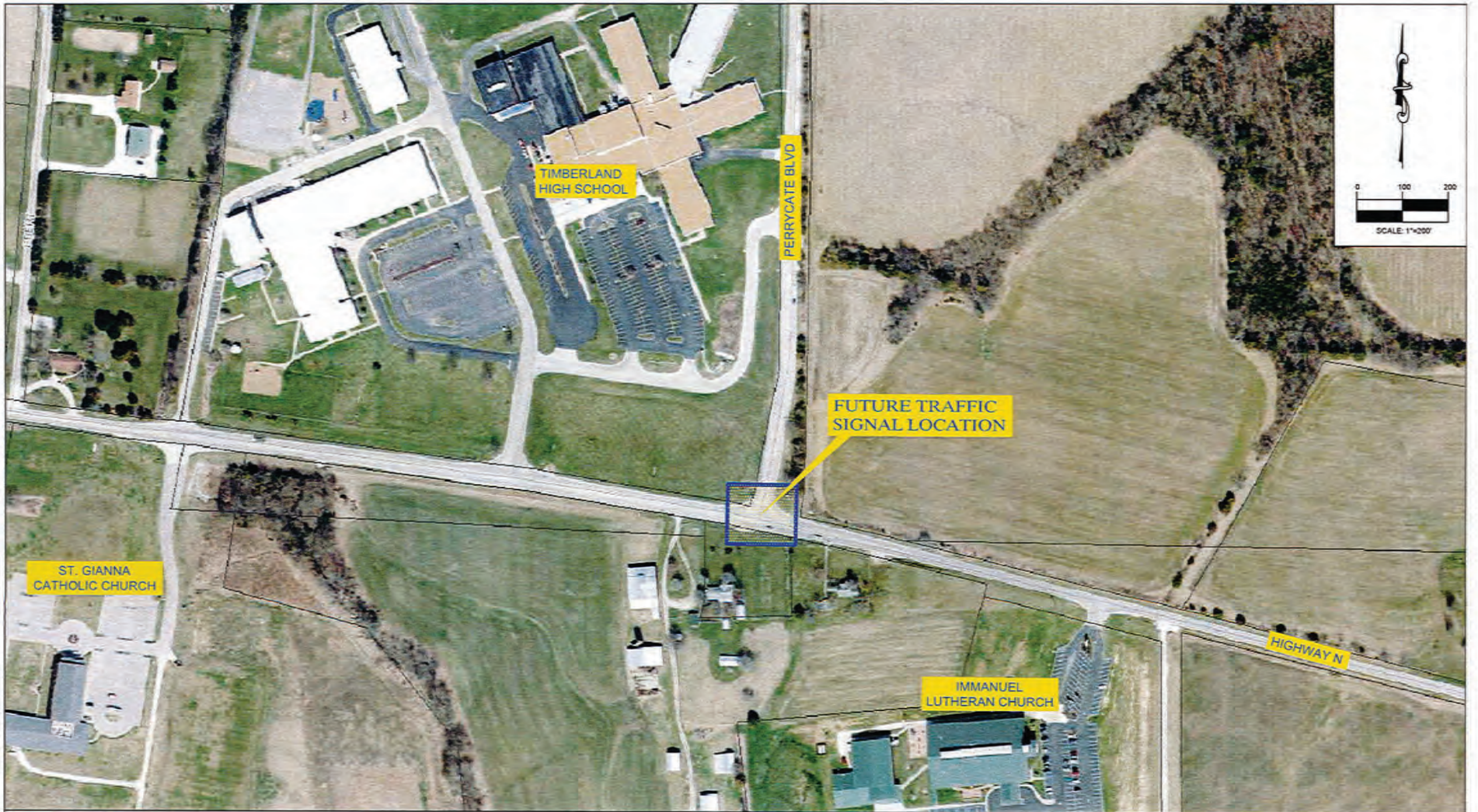
**Sponsor:** City of Wentzville

**Contact:** Engineering Department

**Phone:** 636-639-2189

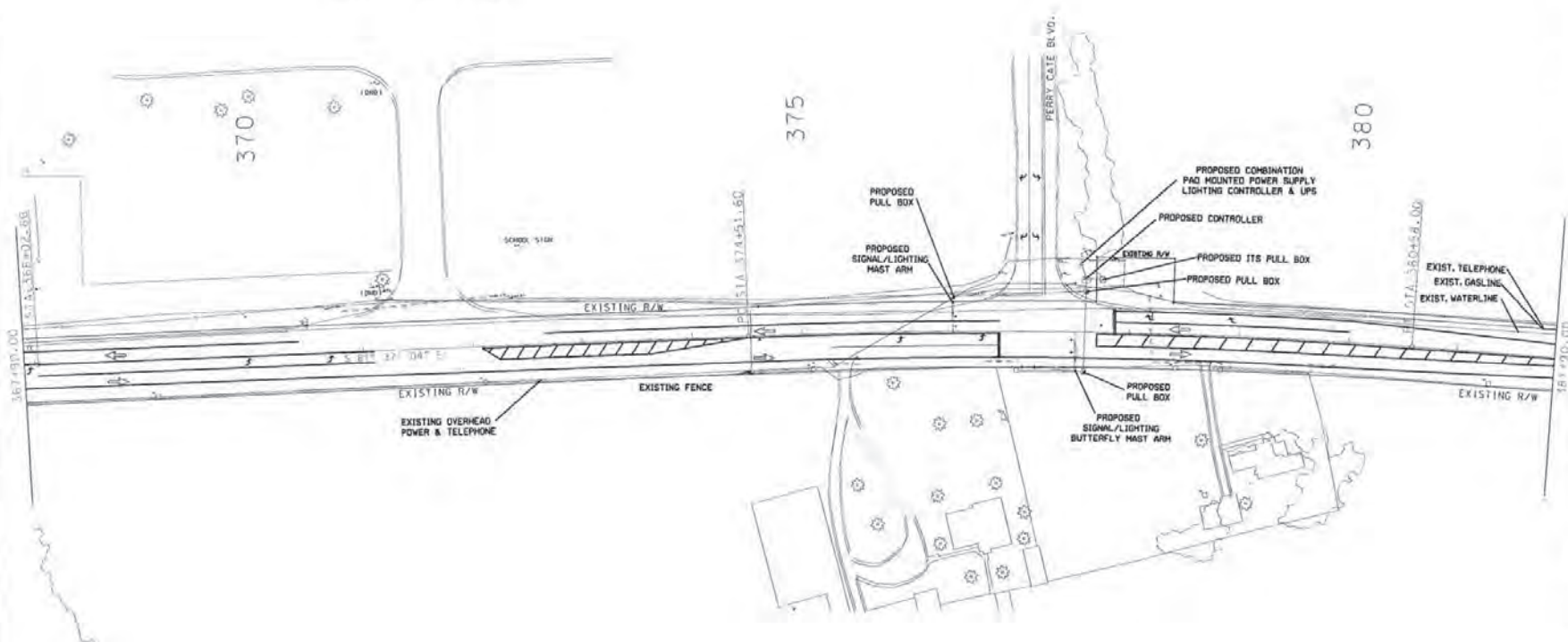
**Website:** [www.wentzvillemo.gov/departments/engineering/index.php](http://www.wentzvillemo.gov/departments/engineering/index.php)

Update: 6/9/2022



**PROJECT LOCATION MAP**  
**TRAFFIC SIGNAL AT ROUTE N AND PERRYCATE BLVD**

WENTZVILLE R-IV  
SCHOOL DISTRICT  
SOUTH CAMPUS



**DISCLAIMER**  
THE PROFESSIONAL WHOSE SIGNATURE AND PERSONAL SEAL APPEAR HEREON ASSUMES RESPONSIBILITY ONLY FOR WHAT APPEARS ON THIS PAGE, AND DISCLAIMS (PURSUANT TO SECTION 327.411 RSMO) SPECIFICATION, ESTIMATES, REPORTS, OR OTHER DOCUMENTS OR INSTRUMENTS NOT SEALED BY THE UNDERSIGNED PROFESSIONAL RELATING TO OR INTENDED TO BE USED FOR ANY PART OR PARTS OF THE PROJECT TO WHICH THIS PAGE REFERS.

ALL WORK SHALL BE IN ACCORDANCE WITH THE MISSOURI ENGINEERING & SURVEYING BOARD REGULATIONS.

DATE PREPARED  
**5/24/2016**

NO. <b>N</b>	STATE <b>MO</b>
PROJ. NO. <b>SL</b>	DIST. NO.

CITY OF **ST. CHARLES**

JOB NO.

CONTRACT NO.

PROJECT NO.

PROJECT FILE

PROJECT FILE

PROJECT FILE

PROJECT FILE

PROJECT FILE

PROJECT FILE

PROJECT FILE

PROJECT FILE

PROJECT FILE

PROJECT FILE

PROJECT FILE

PROJECT FILE

PROJECT FILE

PROJECT FILE

PROJECT FILE

PROJECT FILE

PROJECT FILE

PROJECT FILE

PROJECT FILE

PROJECT FILE

PROJECT FILE

PROJECT FILE

PROJECT FILE

PROJECT FILE

PROJECT FILE

PROJECT FILE

PROJECT FILE

PROJECT FILE

PROJECT FILE

PROJECT FILE

PROJECT FILE

PROJECT FILE

PROJECT FILE

PROJECT FILE

PROJECT FILE

PROJECT FILE

PROJECT FILE

PROJECT FILE

PROJECT FILE

PROJECT FILE

PROJECT FILE

PROJECT FILE

PROJECT FILE

PROJECT FILE

MISSOURI HIGHWAYS AND TRANSPORTATION COMMISSION

1-800-452-MODOT (1-800-452-6636)

CONCEPTUAL  
TRAFFIC SIGNAL  
ROUTE N @  
PERRY GATE BLVD.

