

This road project paid in part through the
St. Charles County ½ Cent Transportation Sales Tax.

ELM STREET & HARDIN MIDDLE SCHOOL TRAFFIC SIGNAL

Project Location:

Intersection of Elm Street and Hardin Middle School Entrance

Project Description:

This project provided for the installation of a new traffic signal at the intersection of Elm Street and the southernmost entrance to Hardin Middle School. The existing intersection was only stop controlled for northbound traffic on Elm Street; southbound traffic was able to move freely with no stop control. This unconventional stop control provided gaps in the northbound traffic for southbound drivers to turn left into the school and for drivers turning out of the school. In order to improve safety at this intersection, it was determined that this unconventional stop control should be removed and replaced with a traffic signal to protect left-turn movements and pedestrian crossings at this intersection. The City of St. Charles partnered with the City of St. Charles School District on this project. The funding listed below as “Other” was provided for by the School District.

Project Status: Construction Completed

Original Project Funding:

TOTAL	County	Sponsor	Federal	Other
\$300,000	\$150,000	\$75,000	\$0	\$75,000

Final County Contribution: \$78,958

Completion Year: 2019

Sponsor: City of Saint Charles

Contact: Engineering Department

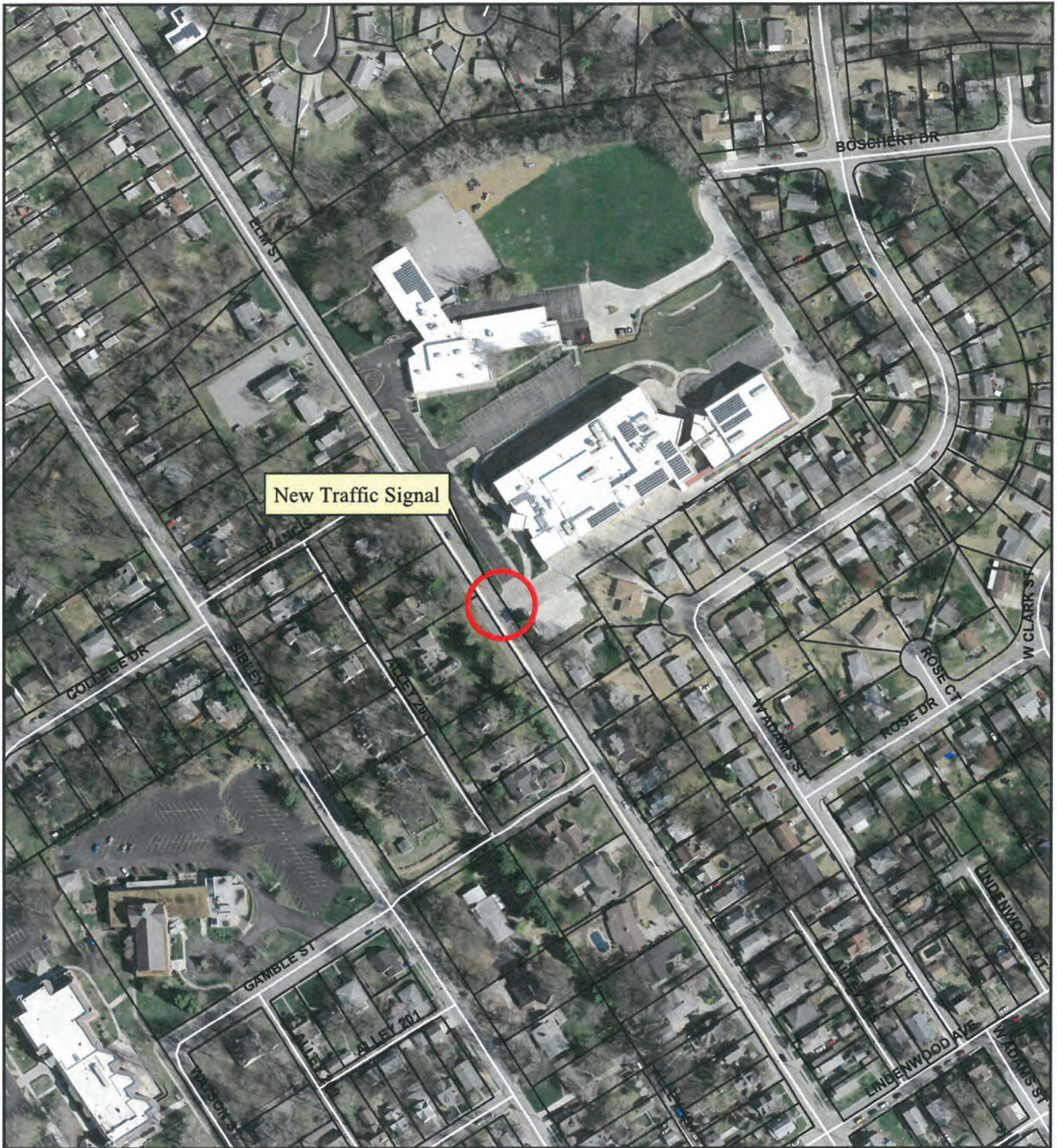
Phone: 636-949-3237

Email: engineering.department@stcharlescitymo.gov

Website: www.stcharlescitymo.gov/202/Engineering

Update: 6/9/2022

Elm Street & Hardin Middle School Traffic Signal



DISCLAIMER: This map is based on information maintained by the City of St. Charles, Missouri. The City does not warrant or guarantee the accuracy or completeness of the information shown. It is the responsibility of the user of this information to verify independently its accuracy and completeness. By using this information, the user waives any and all claims against the City of St. Charles, Missouri, arising from such use.



NOT TO SCALE
DATE: 5/3/2017



