

This road project paid in part through the
St. Charles County ½ Cent Transportation Sales Tax.

WEISS ROAD AT ROUTE N

Project Location:

Realignment of the intersection of Route N and Weiss Road

Project Description:

This project realigned the intersection of Weiss Road and Route N to match the predominant traffic movements and improve safety at the intersection due to existing high crash rates. Weiss Road intersected Route N at a very sharp curve in the horizontal alignment that was also steeply superelevated. With traffic continuing to increase at this intersection, it was expected that crashes will also only continue to increase, therefore this project was designed to address this growing safety issue. The new intersection involved the realignment of both Route N and Weiss Road, straightening both roads and removing the need for the extreme superelevation at this intersection. The project reconfigured the intersection to a northbound/southbound flow from Weiss Road to Route N into and out of downtown Cottleville. The traffic signal was reconstructed and a fourth leg was added on the east side for a new development.

Project Status: Construction Completed

Final Project TOTAL (Design, R/W & Construction): \$2,034,932

Final Federal Contribution: \$1,096,000

FINAL COUNTY Contribution: \$938,932

Completion Year: 2022

Contact: County Highway

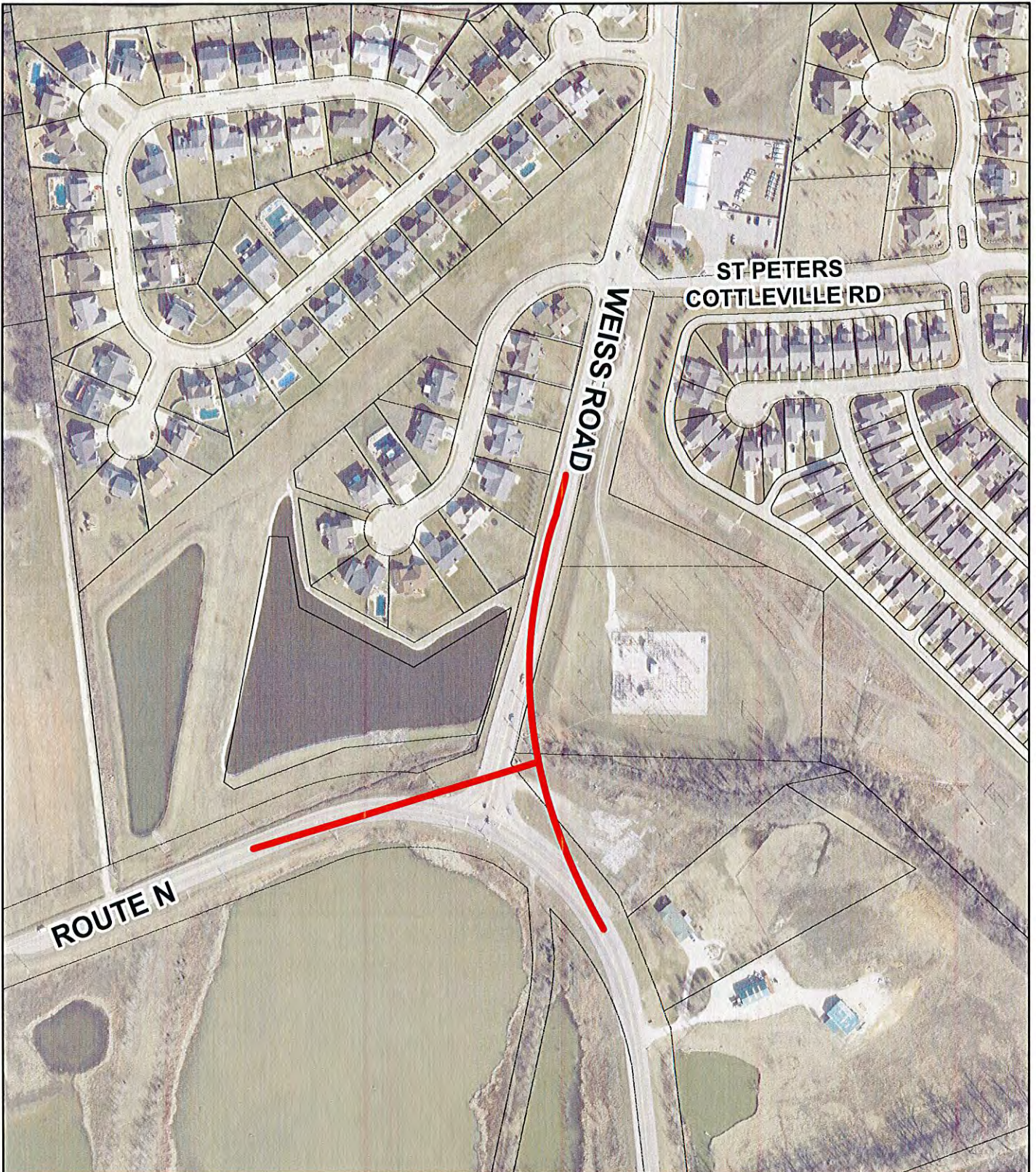
Phone: 636-949-7305

Email: highway@sccmo.org

Website: [County Highway Department](#)

[St. Charles County Public Web Map Link](#)

Update: 10/25/2023



**WEISS ROAD AT ROUTE N
INTERSECTION IMPROVEMENT PROJECT**



PROJECT LENGTH:
WEISS ROAD: 0.18 MILES
ROUTE N: 0.12 MILES

