

This road project paid in part through the
St. Charles County ½ Cent Transportation Sales Tax.

NEW TOWN AND SKINNER INDUSTRIAL DRIVE INTERSECTION RECONSTRUCTION

Project Location:

Intersection of Skinner Industrial, Mueller, and New Town Boulevard

Project Description:

This project constructed traffic flow improvements along New Town Boulevard to enhance traffic operations and safety in the area by combining two closely spaced intersections into one signalized intersection. The project relocated Skinner Industrial Drive to align with Mueller Road at New Town Boulevard with a dedicated left turn lane for Skinner Industrial Drive. The alignment of Skinner Industrial Drive accommodates a future extension to Bethman Road. The existing traffic signal was upgraded to accommodate the new approach for Skinner Industrial Drive. The Boschert Greenway Trail crossing at New Town Boulevard was reconstructed as part of the intersection improvements. The relocated Skinner Industrial Drive crosses Boschert Creek with a new triple cell box culvert. The new culvert is aligned to facilitate future reconstruction of the existing culvert under New Town Boulevard.

Original Project Funding:

TOTAL	County	Sponsor	Federal	Other
\$2,532,320	\$1,087,500	\$370,000	\$0	\$1,074,820

Final Project Total: \$1,853,568

Final County Contribution: \$528,105

Completion Year: 2021

Anticipated Site Investment: \$13M

Anticipated Jobs Created: 400 jobs

Sponsor: City of Saint Charles

Contact: Engineering Department

Phone: 636-949-3237

Email: engineering.department@stcharlescitymo.gov

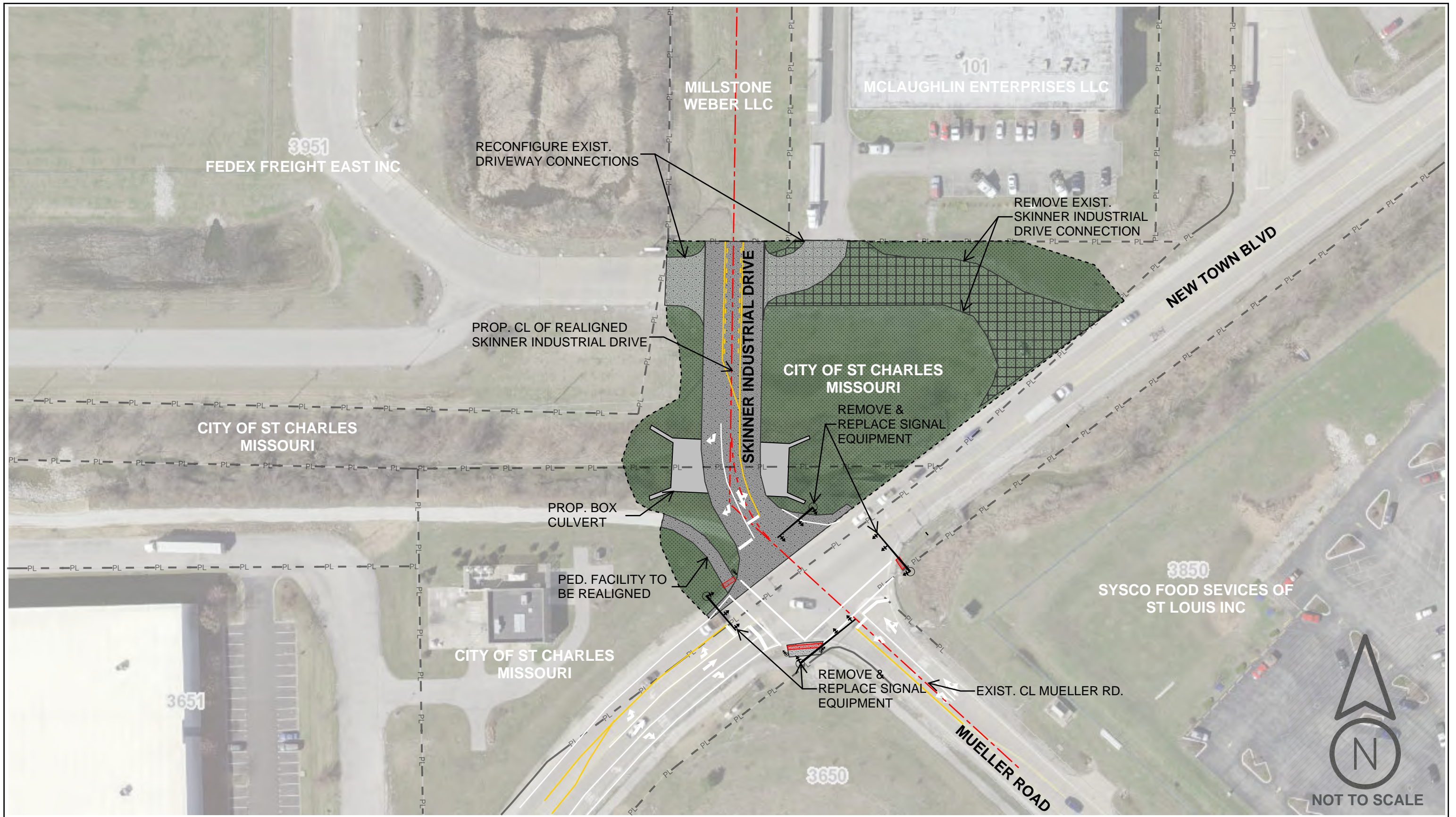
Update: 9/19/2022



ATTACHMENT 2
LOCATION MAP



TRAFFIC FLOW IMPROVEMENTS FOR THE FEDEX
EXPANSION IN THE CITY OF ST. CHARLES



**CITY OF SAINT CHARLES
TRAFFIC FLOW IMPROVEMENTS FOR THE FED-EX EXPANSION IN THE CITY OF ST. CHARLES
ATTACHMENT 4 - CONCEPTUAL PLAN**