

This road project paid in part through the
St. Charles County ½ Cent Transportation Sales Tax.

DEER CREEK DRIVE EXTENSION

Project Location:

Elaine Drive from Deer Creek Drive north of Peruque Creek to 0.2 miles north of Thoreau Boulevard

Project Description:

This project provided for a new roadway to complete the connection between Deer Creek Drive and Elaine Drive. Deer Creek Drive began at Route P and extended south where it terminated just north of Peruque Creek. Elaine Drive began at West Terra Lane and extended north where it terminated approximately 0.2 miles north of Thoreau Boulevard. This project provided for a new 2-lane roadway connection with new sidewalk along the east side of the road. The project also included a multi-span bridge over Peruque Creek.

Project Status: Construction completed

Original Anticipated Project Cost: \$5,900,000

FINAL PROJECT TOTAL (Funded 100% by County): \$5,923,252

Completion Year: 2016

Contact: County Highway

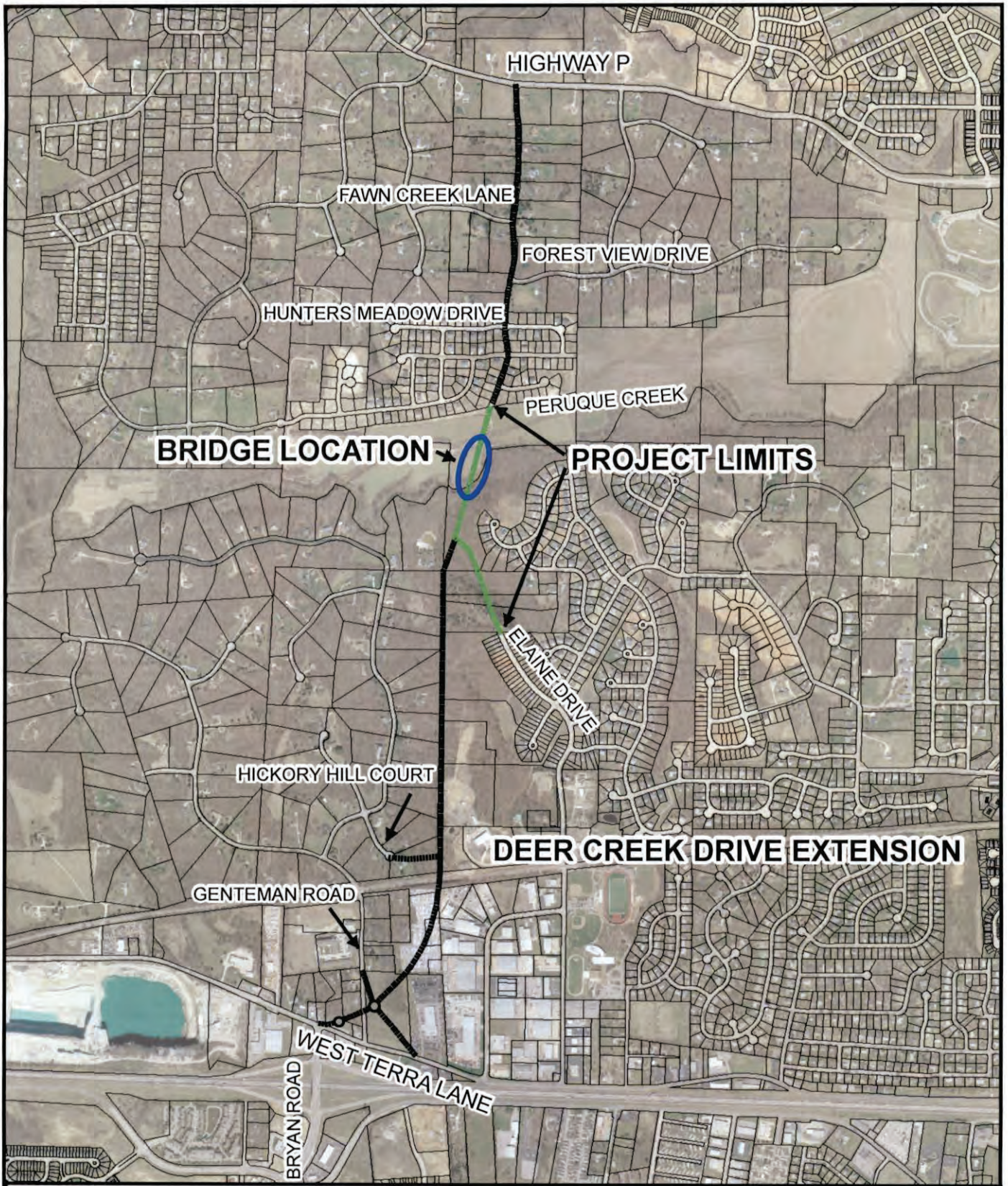
Phone: 636-949-7305

Email: highway@sccmo.org

Website: [County Highway Department](#)

[St. Charles County Public Web Map Link](#)

Update: 10/25/2023



DEER CREEK DRIVE EXTENSION
FROM WEST TERRA LANE
TO HIGHWAY P
PROJECT LENGTH: 2.07 MILES

