



Amanda Brauer, P.E., PTOE  
Roads and Traffic Manager

This road project paid in part through the  
St. Charles County ½ Cent Transportation Sales Tax.

## HIGHWAY 370 / MEL WETTER PARKWAY INTERCHANGE STUDY

### Project Location:

Mel Wetter Parkway from Little Hills Expressway to Route 370

### Project Description/Scope:

This project will conduct a study to determine the optimal configuration for an interchange at Hwy 370 & Fifth Street.

### Project Timeline:

Task Name	Planned Start Date	Planned Finish Date
Planning		Completed
Design	9/6/2016	12/7/2017
Utility Coordination		N/A
Construction		N/A
Project Closeout	12/8/2017	12/28/2017

### Sponsor & Contact:

City of Saint Charles

Matt Seggerman

636-949-3237

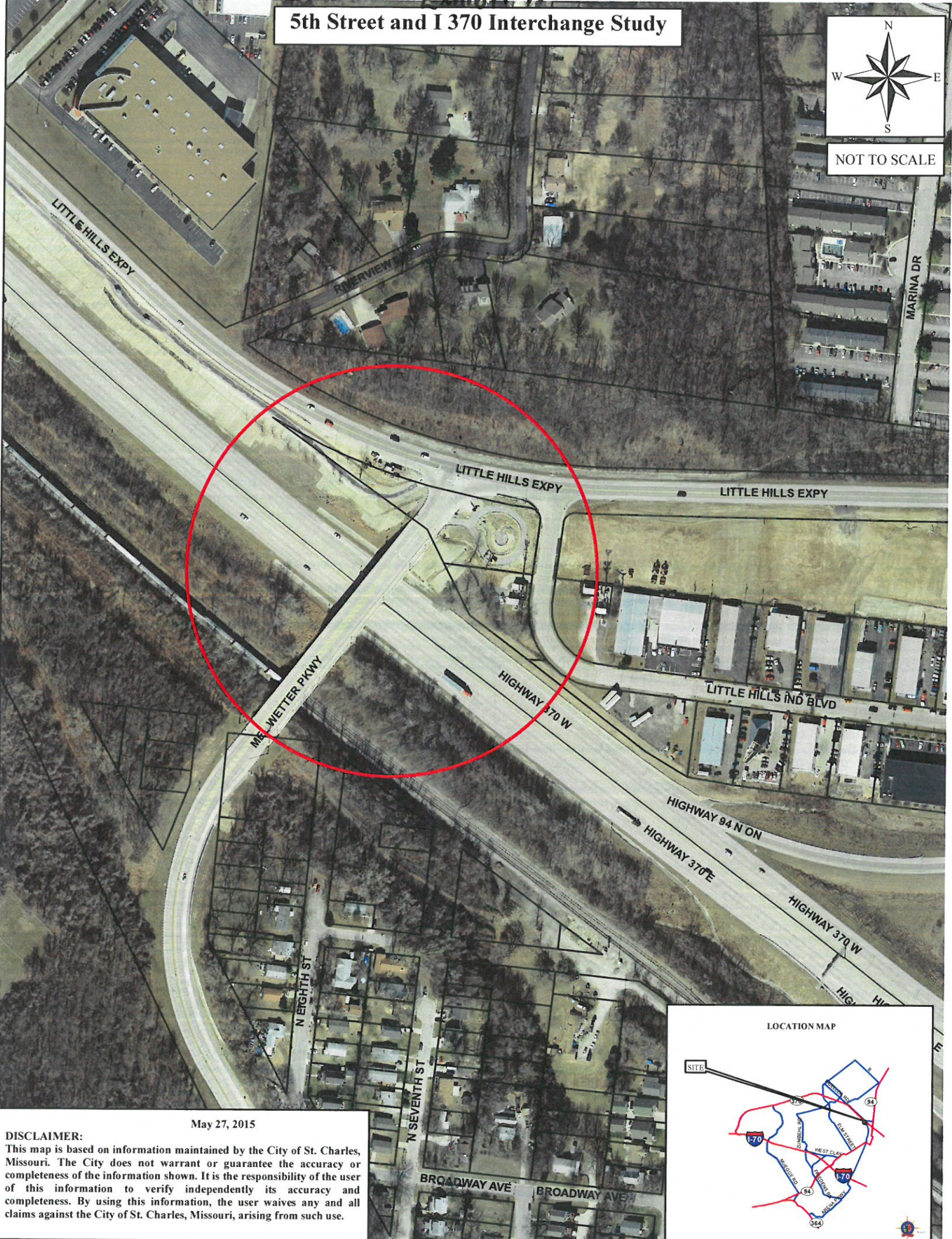
[matthew.seggerman@stcharlescitymo.gov](mailto:matthew.seggerman@stcharlescitymo.gov)

Update: 9/05/2017

# 5th Street and I 370 Interchange Study



NOT TO SCALE



May 27, 2015

**DISCLAIMER:**  
This map is based on information maintained by the City of St. Charles, Missouri. The City does not warrant or guarantee the accuracy or completeness of the information shown. It is the responsibility of the user of this information to verify independently its accuracy and completeness. By using this information, the user waives any and all claims against the City of St. Charles, Missouri, arising from such use.

