



Amanda Brauer, P.E., PTOE  
Roads and Traffic Manager

This road project paid in part through the  
St. Charles County ½ Cent Transportation Sales Tax.

## **NORTH FAIRGROUNDS ROAD ALIGNMENT STUDY**

### **Project Location:**

From Boone's Lick Rd. to First Capitol Dr.

### **Project Description/Scope:**

The project study will evaluate the best location to extend Fairgrounds Road from Boone's Lick Road to First Capitol Drive.

### **Project Timeline:**

Task Name	Planned Start Date	Planned Finish Date
Planning		Completed
Design	5/5/2017	4/18/2018
Utility Coordination		N/A
Construction		N/A
Project Closeout	4/19/2018	6/29/2018

### **Sponsor & Contact:**

City of Saint Charles

Todd Hughes

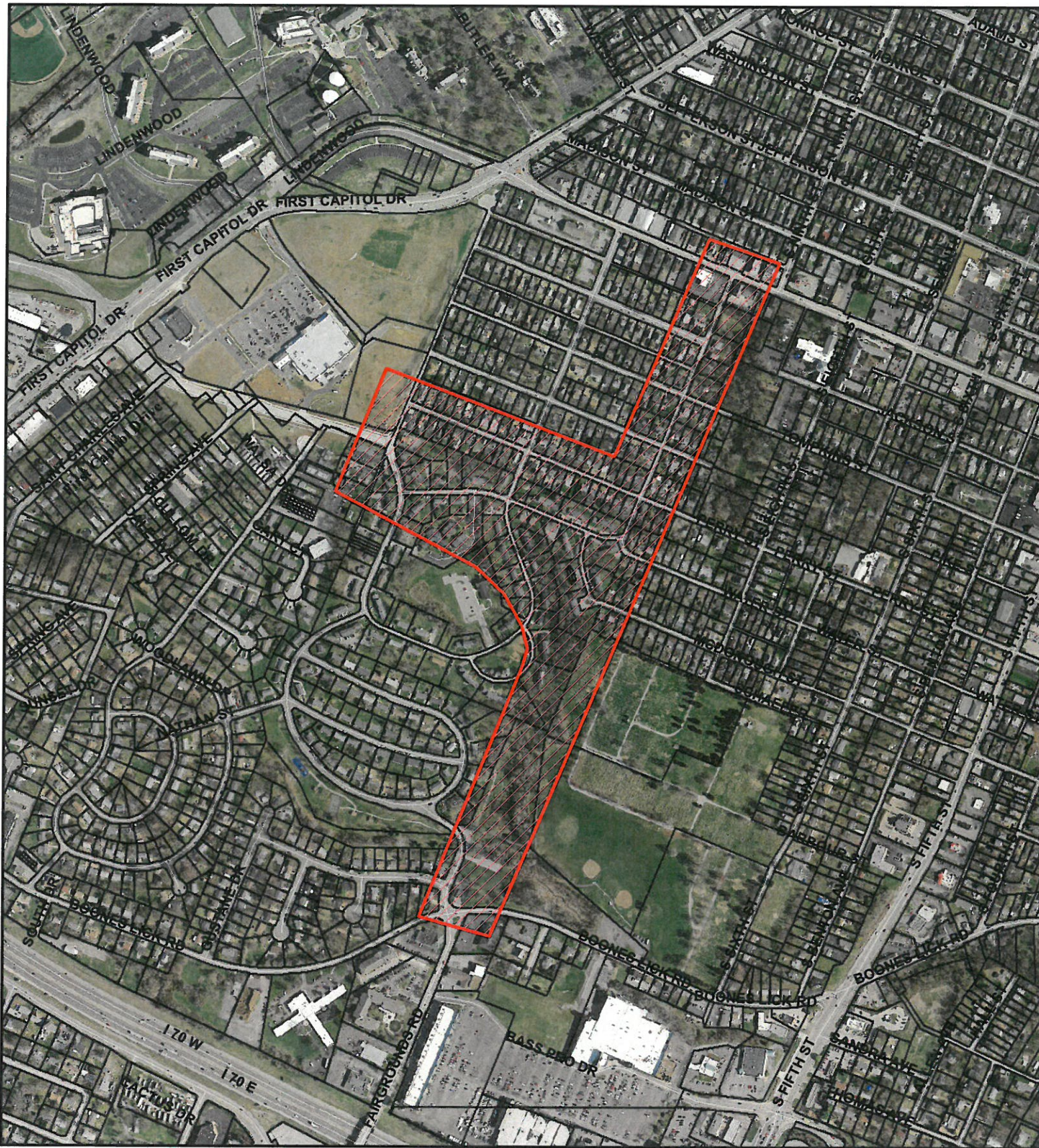
636-949-3237

todd.hughes@stcharlescitymo.gov

Update: 9/05/2017



# North Fairgrounds Road Extension Alignment Study



**DISCLAIMER:** This map is based on information maintained by the City of St. Charles, Missouri. The City does not warrant or guarantee the accuracy or completeness of the information shown. It is the responsibility of the user of this information to verify independently its accuracy and completeness. By using this information, the user waives any and all claims against the City of St. Charles, Missouri, arising from such use.



**NOT TO SCALE**  
**DATE: 4/15/2016**

