



This road project paid in part through the
St. Charles County ½ Cent Transportation Sales Tax.

WEISS ROAD @ ROUTE N

Project Location:

Realignment of the intersection of Route N and Weiss Road for a distance of 0.19 miles along the Weiss Road leg of the intersection and 0.12 miles along Route N west of Weiss Road

Project Description/Scope:

The intersection of Weiss Road and Route N does not serve the growing traffic needs and has a high crash rate. Would realign both roads, possibly with a "Green-T" intersection configuration.

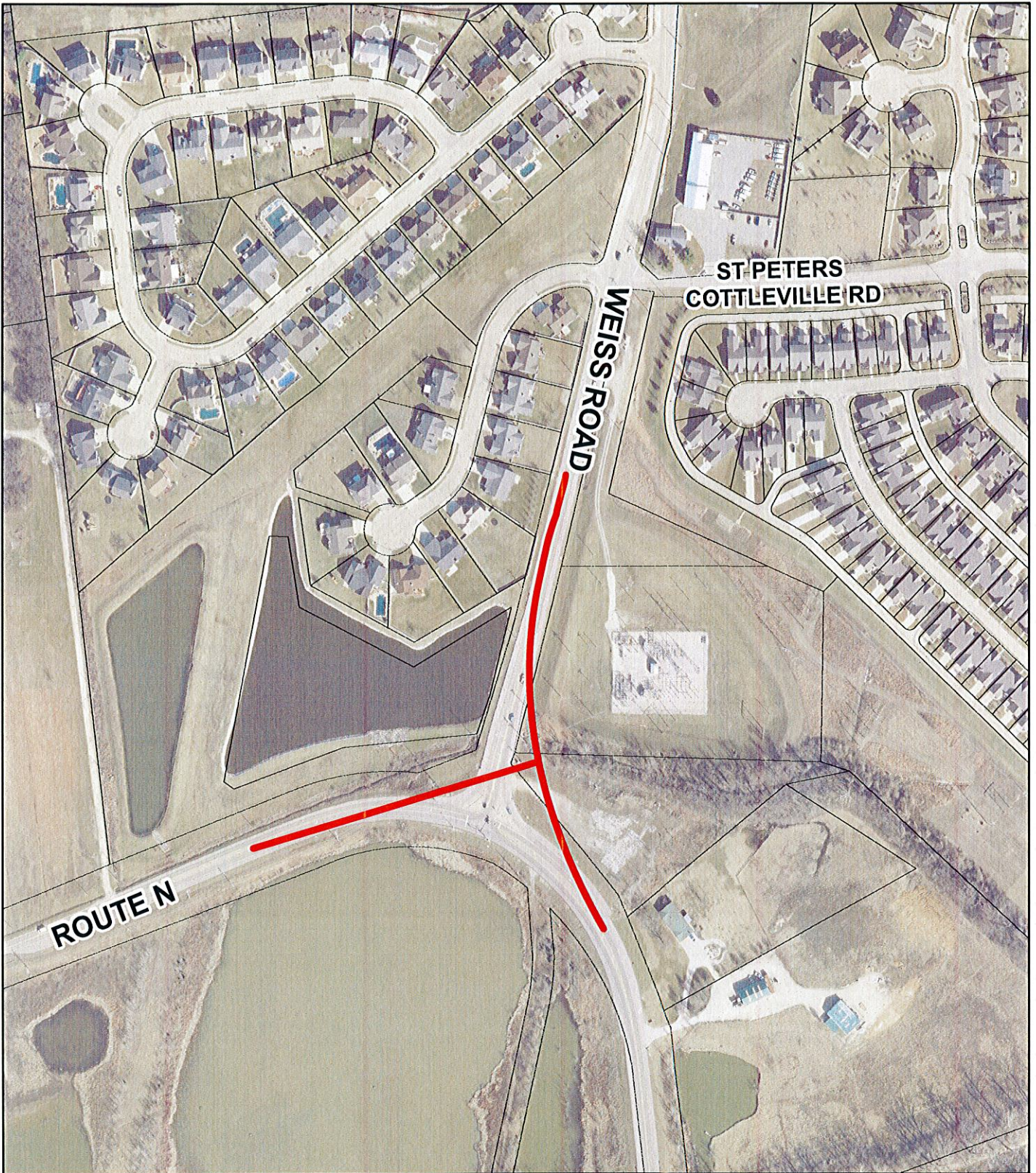
Project Timeline:

Task Name	Planned Start Date	Planned Finish Date
Planning		N/A
Design	1/1/2017	12/31/2018
Utility Coordination	1/1/2017	4/1/2019
Construction	3/1/2019	9/1/2019
Project Closeout	9/1/2019	12/1/2019

Sponsor & Contact:

County Highway
Chris Bostic
636-949-7305
cbostic@sccmo.org

Update: 9/05/2017



**WEISS ROAD AT ROUTE N
INTERSECTION IMPROVEMENT PROJECT**



PROJECT LENGTH:
WEISS ROAD: 0.18 MILES
ROUTE N: 0.12 MILES

